



# V1504

**VERTICAL PLATFORM LIFT**

## **PLANNING GUIDE**

**Applicable Codes:**

**ASME A17.1**

**ASME A18.1**

**CAN/CSA B355**

**CAN/CSA B613**

Copyright © 2016  
Savaria Concord Lifts, Inc.  
All rights reserved.

Printed in Canada

---

## Purpose of This Guide

This guide assists architects, contractors, and lift professionals to incorporate the V1504 Vertical Platform Lift into a residential or public building design. The design and manufacture of the V1504 Vertical Platform Lift meets the requirements of the following codes and standards:

- ASME A18.1-2003 Section 2 (Public)
- ASME A18.1-2005 Section 2 (Public)
- ASME A18.1-2008 Section 2 (Public)
- ASME A18.1-2011 Section 2 (Public)
- ASME A18.1-2014 Section 2 (Public)
- ASME A18.1-2003 Section 5 (Private)
- ASME A18.1-2005 Section 5 (Private)
- ASME A18.1-2008 Section 5 (Private)
- ASME A18.1-2011 Section 5 (Private)
- ASME A18.1-2014 Section 5 (Private)
- ASME A17.1-1996 Section 20 (Public)
- ASME A17.1-1996 Section 21 (Private)
- CAN/CSA B355 S1-02 (Public)
- CAN/CSA-B355-09 (Public)
- CAN/CSA B613-2000 (Private)

We recommend that you contact your local authority having jurisdiction to ensure that you adhere to all local rules and regulations pertaining to vertical platform lifts.

**IMPORTANT:** This Planning Guide provides nominal dimensions and specifications useful for the initial planning of a vertical platform lift project. Dimensions and specifications are subject to change without notice due to continually evolving code and product applications.

Before beginning actual construction, please consult Savaria or the authorized Savaria dealer in your area to ensure you receive your site-specific installation drawings with the dimensions and specifications for your project.

Visit our website for the most recent V1504 drawings and dimensions.

### How to Use This Guide

- 1 Determine your client's intended use of the lift.
- 2 Determine the local code requirements.
- 3 Determine the site installation parameters.
- 4 Determine the cab type and hoistway size requirements.
- 5 Plan for electrical requirements.

### History

April 6, 2010 - Initial release

May 16, 2011 - Updated "Travel speed" in Specifications table to 20 ft/min (0.1 m/s)

June 17, 2011 - Added 24V battery backup to Options to Specifications table on page 5

July 8, 2013 - Added Noise Level to Specifications table on page 4

July 29, 2013 - Added optional 80" cab wall height to Specifications table on page 4

October 7, 2013 - Added seat capacity to Specifications table on page 4

November 12, 2013 - Revised drawings on pages 12 through 26 to include 42"-wide platforms

December 5, 2013 - Revised enclosure drawings on pages 20 through 24

February 12, 2014 - Added seat dimensions on page 27

March 18, 2014 - Revised motor/drive information in Specifications table on page 5

April 7, 2014 - Revised drawings on pages 20-24

April 29, 2014

May 29, 2014 - Added NOTE to page 27 specifying max seat capacity; Changed motor/drive specification on page 4 from 1 HP to 3 HP

June 9, 2014 - Added Remote Controller/Pump Box dimensions on page 28

June 25, 2014 - Added door and gate drawings - pages 25 to 36

July 28, 2014 - Added DuraSwing operator drawings - pages 37 to 40

September 11, 2014 - Removed section "Additional Branch Circuit" from page 43

November 5, 2014 - Revised Applicable Codes on page 3

January 20, 2015 - Added new 2014 code in section above

February 17, 2015 - Revised drawings on pages 13 to 19

September 24, 2015 - Added Daily Cycle to specifications table on page 4

March 1, 2016 - Revised Motor/drive specification in table on page 4

June 3, 2016 - Added spec for Additional Branch Circuit on page 43

July 14, 2016 - Added new Prodoor drawing on page 33

August 8, 2016 - Revised voltage in Standard Features on Specifications table on page 4

## Specifications

### V1504 Specifications

Specification	Specification Data
Load capacity	750 lb (340 kg)
Seat capacity	330 lb (150 kg)
Maximum travel	23 ft (7 m)
Travel speed	20 ft/min (0.1 m/s)
Noise level (for typical installation)	72.9 dBA (up direction); 50.0 dBA (down direction) Measured at a height of 1m, distance of 1m, in front of the motor with all panels on
Daily cycle	Normal: 30 Heavy: 75 Excessive: 100 Maximum starts in 1 hour on standard installation: 12 NOTE: Please consult your Sales Representative if there a chance you may exceed these amounts.
Levels serviced	2 (standard), 3, 4
Cab sizes	36" x 48" (914 mm x 1219 mm) 36" x 54" (914 mm x 1371 mm) 36" x 60" (914 mm x 1524 mm) 42" x 48" (1067 mm x 1219 mm) 42" x 54" (1067 mm x 1371 mm) 42" x 60" (1067 mm x 1524 mm)
Cab walls (height)	Standard 42-1/8" (1070 mm) Optional 80" (2031 mm)
Cab access	Enter/exit same side (platform Type 1L and 1R) Front/rear access (platform Type 2) 90 degree access (platform Type 3 and 4)
Power supply	120 VAC, 20 A, 60 Hz, single phase
Motor/drive	2:1 chain hydraulic, 3 Hp, gear-type motor (24 VDC)
Control system	Electronic-free relay logic controller
Tower	Modular 8 ft (2.4 m) base guide rail assembly Roller guide support
Pit depth requirement	3" (76.2 mm)
Finish	Beige electrostatic powder coat paint on all steel surfaces and vacuumed formed plastics
Standard features	24 VDC operation Call/send stations at landings Continuous-pressure type buttons Operating control buttons on platform Automatic battery recharging system (115 VAC) Remote manual lowering device Low-voltage controls Limit switches Handrail Non-skid platform surface No machine room required Emergency stop button

## V1504 Specifications

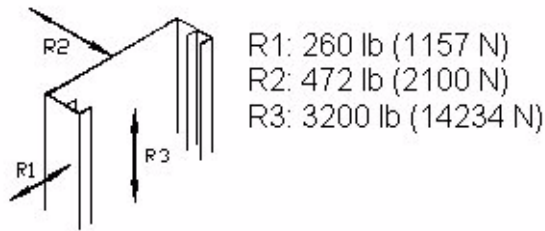
Specification	Specification Data
Safety features	Platform gate Safety underpan Door locks Safety brake Emergency stop buttons Manual lowering and battery lowering system
Options	Platform gate with metal insert and electric strike Top landing gate Upper/lower landing door 80" (2032 mm) Fire-rated, flush-mounted landing entrances Folding seat on platform Telephone on platform Custom color Fixed access ramp Public building package Outdoor package Automatic safety ramp on platform (for outdoor model) 24V battery backup Remote controller/pump box

## Site Construction Details

The V1504 needs a wall that supports a minimum of 472 lb (2100 N) of pull out force at any bracket. The floor must be capable of supporting a load of 3200 lb (14.2 kN). See Figure 1. A wall with a combination of two columns of three 2x4's, or a concrete or brick wall is required.

Figure 2 details a sample wooden support wall configuration

**Figure 1: Wall/Floor Loading**



**Figure 2: Sample Wooden Support Wall Configuration**

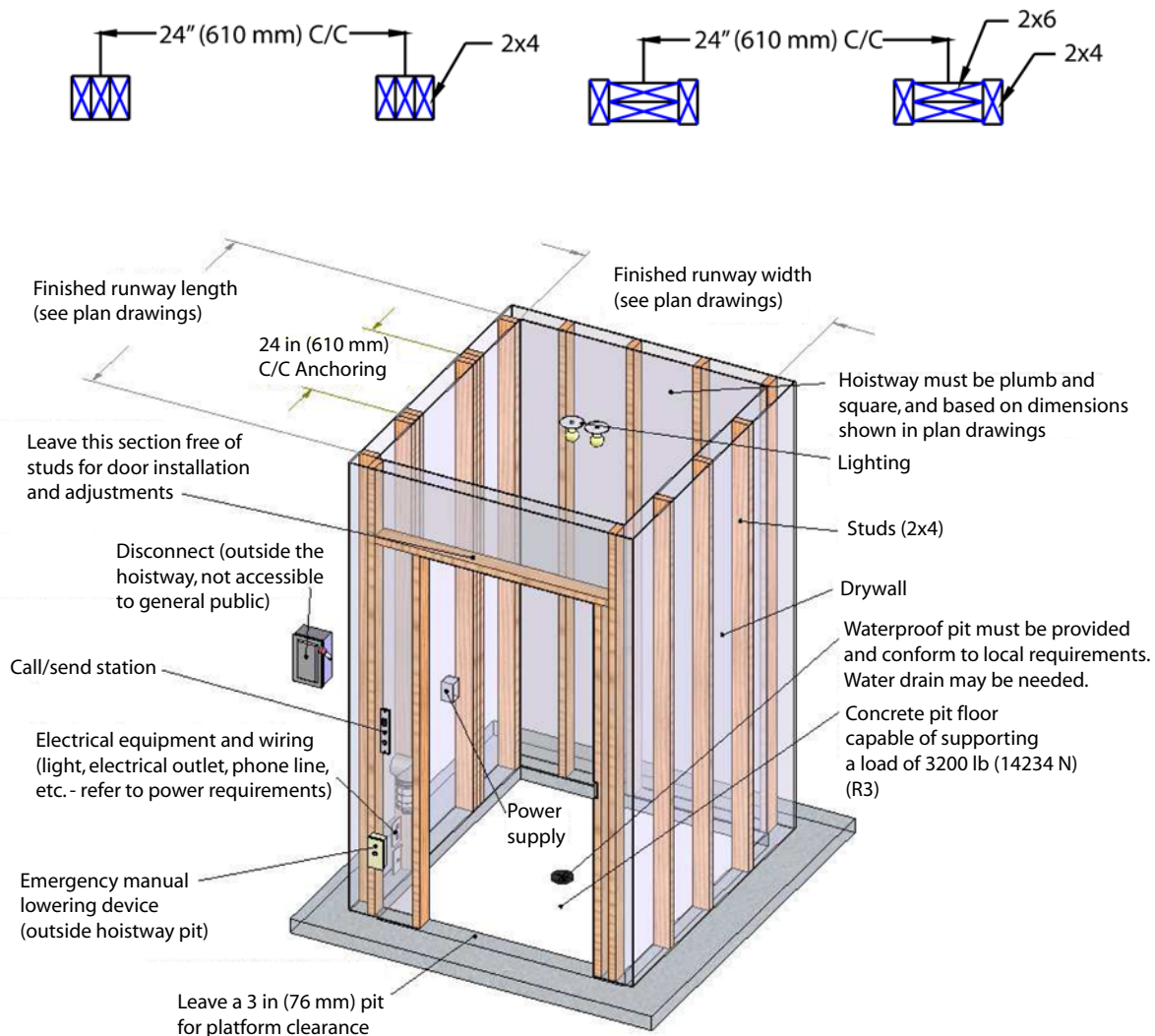


Figure 3 illustrates the recommended steps for constructing a wooden hoistway.

**Figure 3: Wooden Hoistway Construction - Recommended Steps**

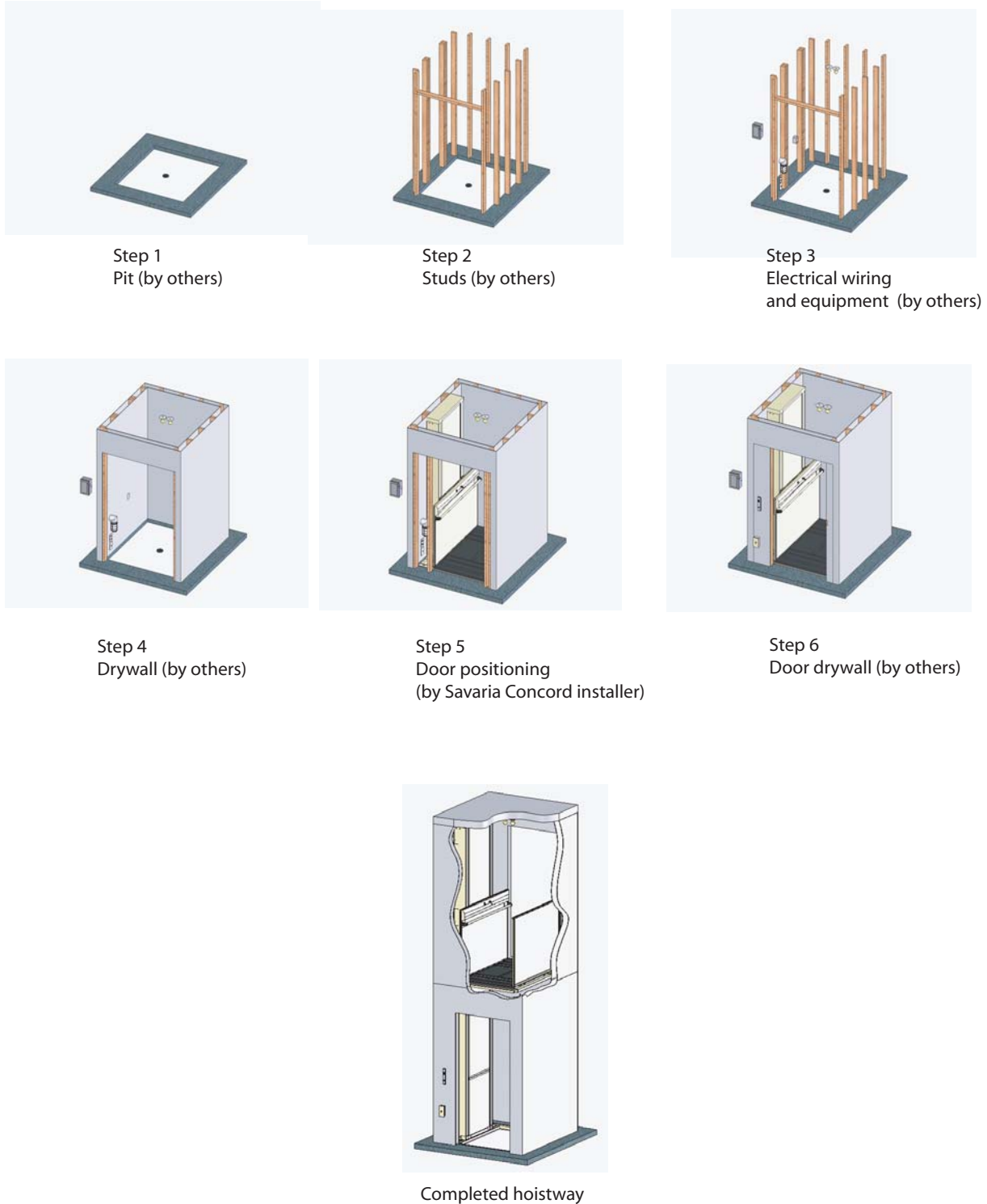


Figure 4 illustrates a sample concrete/steel structure configuration.

Figure 4: Sample Concrete/Steel Structure Configuration

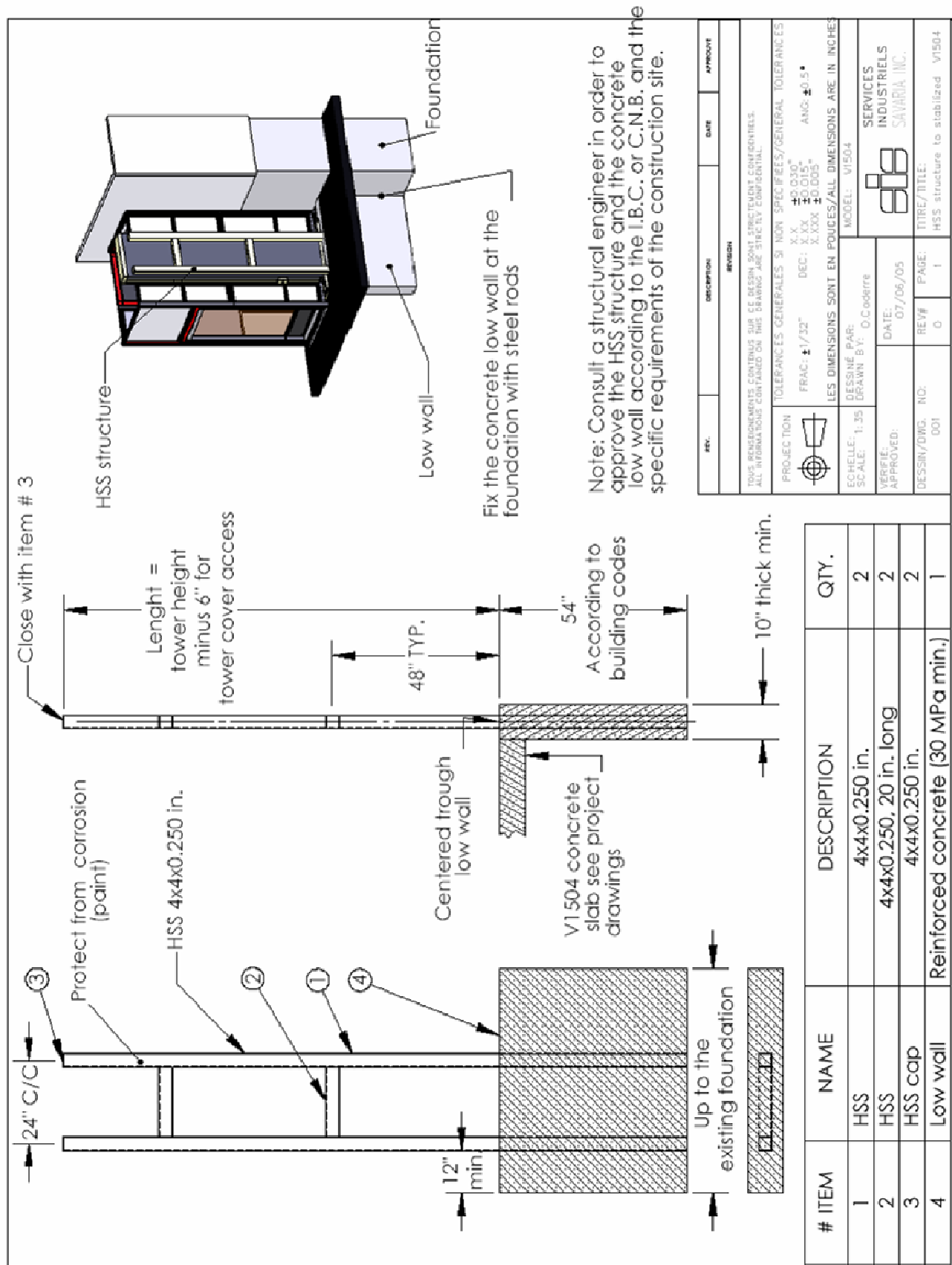




Figure 5 illustrates a sample outdoor enclosure application.

**Figure 5: Sample Outdoor Enclosure Application**

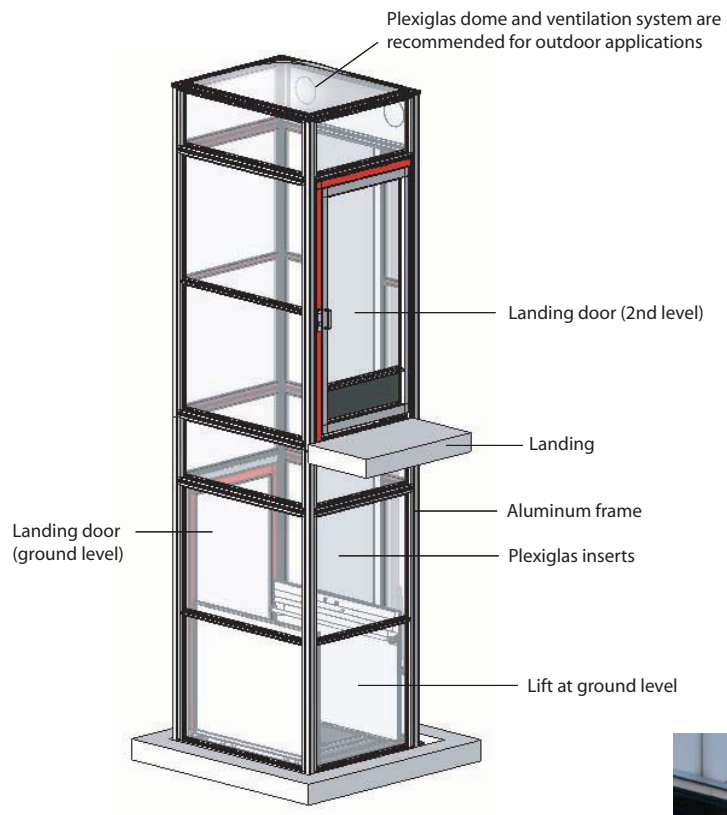


Figure 6 illustrates the site construction details for a typical outdoor application.

**Figure 6: Sample Unenclosed Outdoor Application**

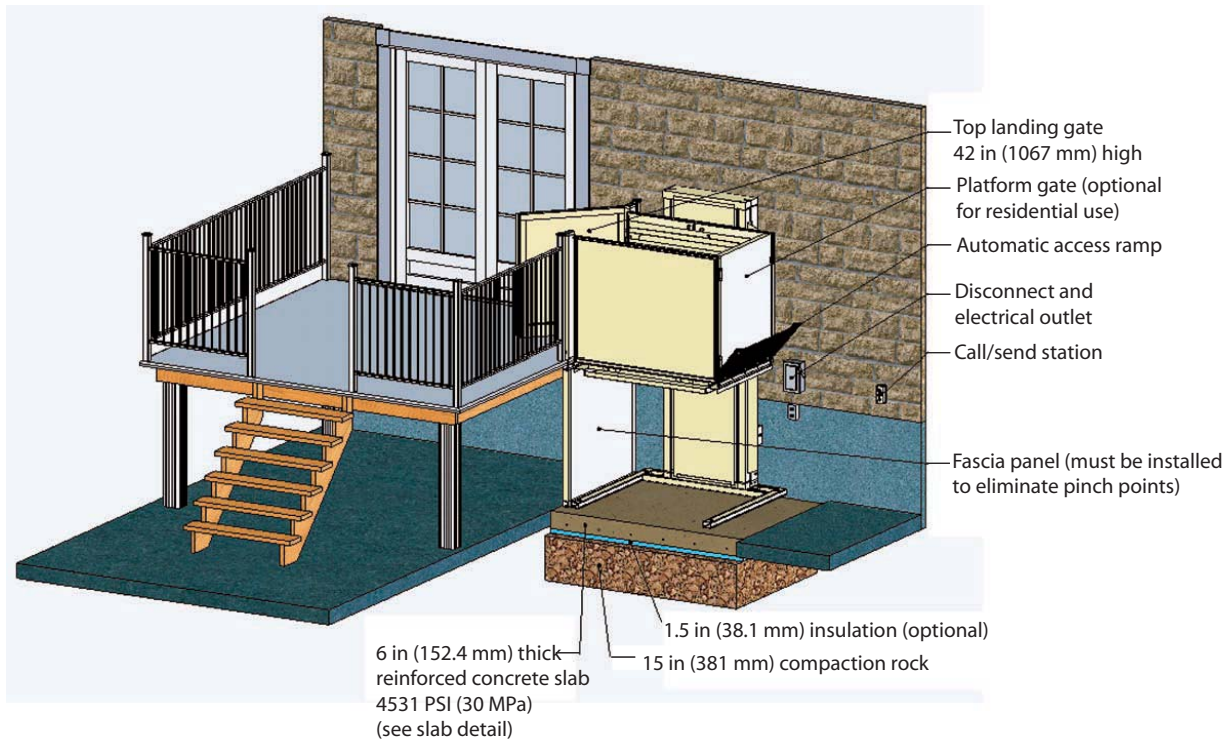
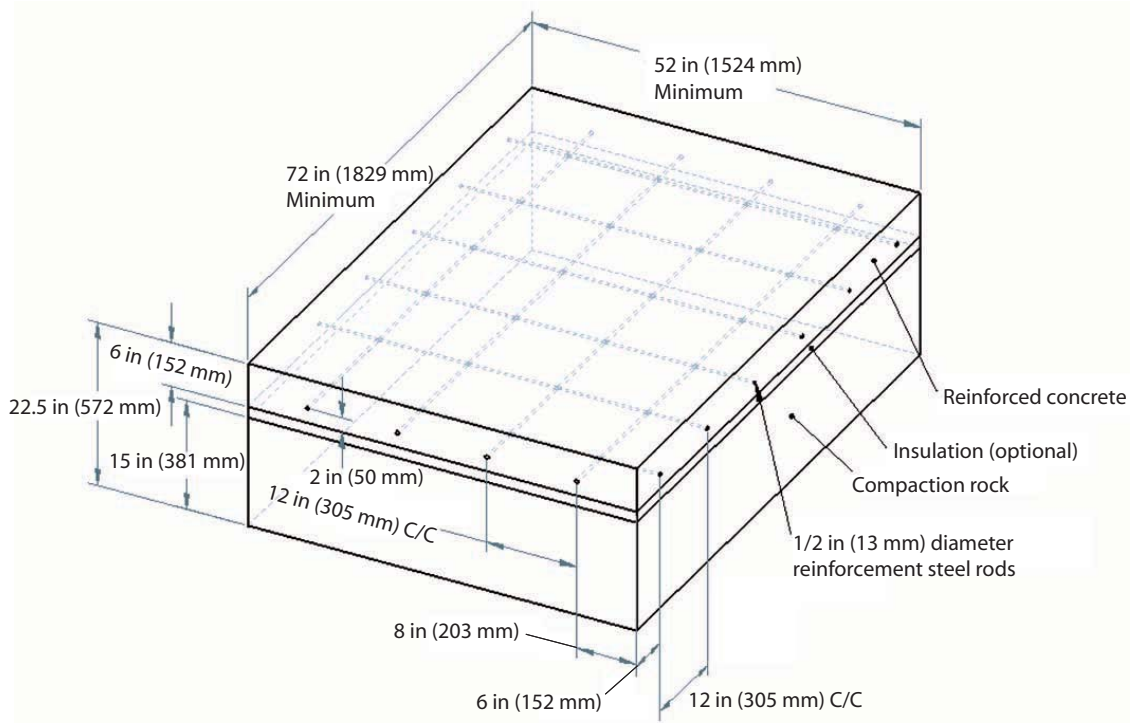


Figure 7 illustrates the concrete slab detail for a typical outdoor application.

**Figure 7: Concrete Slab Detail**

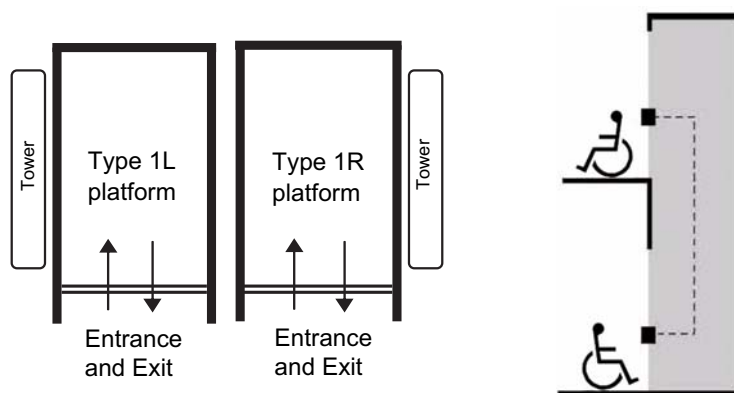


## Cab Types

### Type 1 Cabs

For type 1 cabs, entry and exit are available from only one end of the platform.

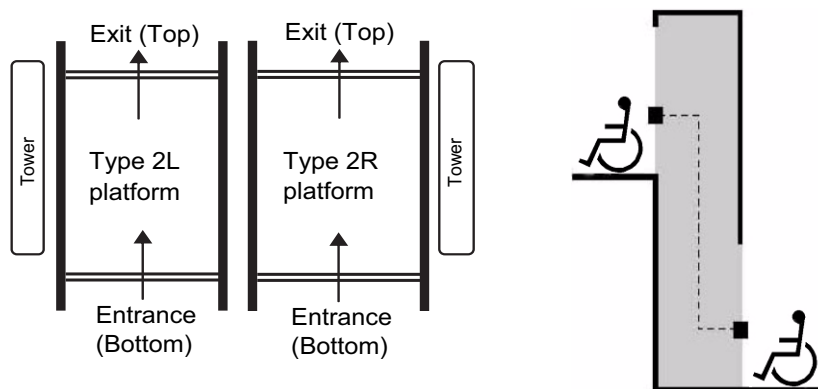
**Figure 8: Type 1 Left and Right**



### Type 2 Cabs

For type 2 cabs, entry and exit are available from both ends of the platform.

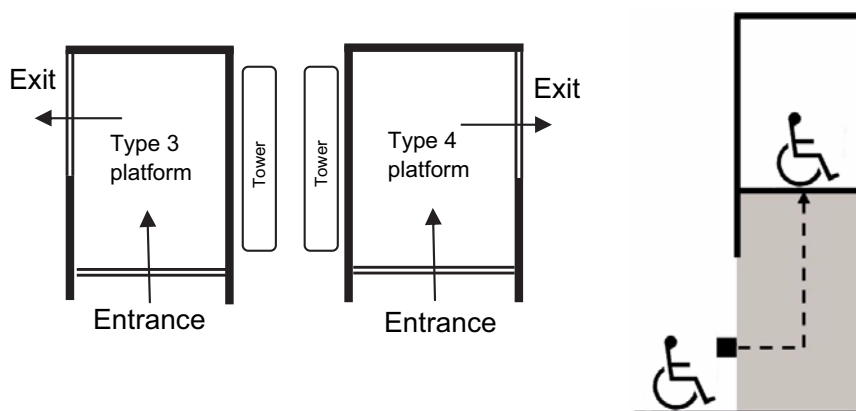
**Figure 9: Type 2**



### Type 3 and 4 Cabs

For type 3 and 4 cabs, entry and exit are available from one end and one side of the platform.

**Figure 10: Type 3 and 4**



## Drawings

- Elevation and plan view, hoistway application (Type 1L)
- Elevation and plan view, hoistway application (Type 1R)
- Elevation and plan view, hoistway application (Type 2)
- Elevation and plan view, hoistway application (Type 3)
- Elevation and plan view, hoistway application (Type 3, 45" opening)
- Elevation and plan view, hoistway application (Type 4)
- Elevation and plan view, hoistway application (Type 4, 45" opening)
- Elevation and plan view, enclosure application (Type 1L)
- Elevation and plan view, enclosure application (Type 1R)
- Elevation and plan view, enclosure application (Type 2)
- Elevation and plan view, enclosure application (Type 3, 45" opening)
- Elevation and plan view, enclosure application (Type 4, 45" opening)
- Auto door, left-hand
- Auto door, right-hand
- Manual door, left-hand
- Manual door, right-hand
- Prodoor auto, left-hand
- Prodoor auto, right-hand
- Prodoor manual, left-hand
- Prodoor manual, right-hand
- Prodoor installation (drywall)
- Auto half gate, left-hand
- Auto half gate, right-hand
- Manual half gate, left-hand
- Manual half gate, right-hand
- DuraSwing on half gate, right-hand
- DuraSwing on half gate, right-hand, 45" opening
- DuraSwing on half gate, left-hand
- DuraSwing on half gate, left-hand, 45" opening
- Seat dimensions
- Remote controller/pump box dimensions

**Note:** Refer to the Architects & Builders portion of our main website ([www.savaria.com](http://www.savaria.com)) for other door/gate sizes.

Figure 11: Elevation and plan view, hoistway application (Type 1L)

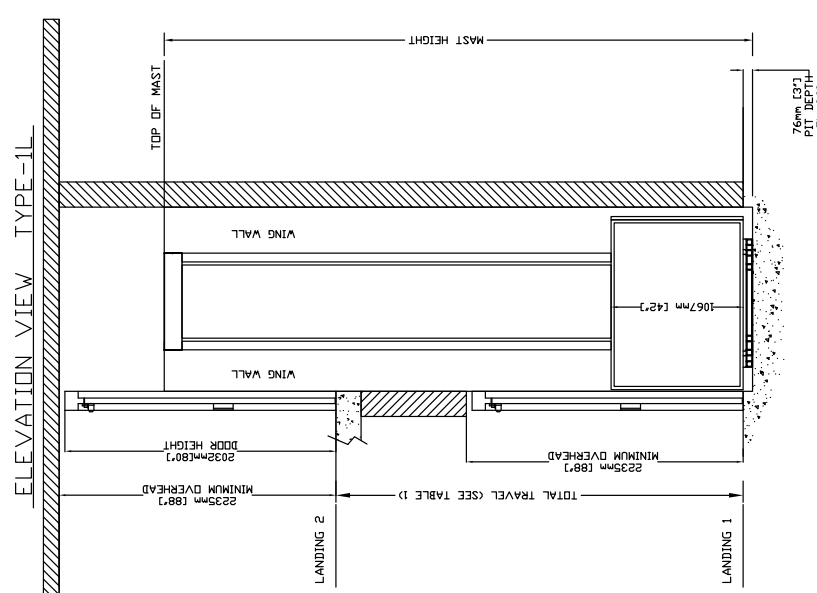


TABLE 1- MAST HEIGHT \*

Max. Travel mm (Inches)	Extension Height mm (Inches)	Mast Height with 4.188" CAP mm (Inches)
2388 (94")	1778 (70")	1168 (46")
1219 (48")	1	2748 108.188
1524 (60")	1	3053 120.188
1829 (72")	1	3307 130.188
2438 (96")	1	3916 154.188
2743 (108")	1	4272 168.188
3048 (120")	1	4526 178.188
3658 (144")	2	5136 202.188
4267 (168")	2	6050 238.188
4877 (192")	2	6660 262.188
5486 (216")	3	7269 286.188
6096 (240")	3	7828 308.188
6706 (264")	3	8438 332.188
7010 (276")	3	8692 342.188

\*EXAMPLE TABLE WITH 3" PIT, DIMENSIONS VARY WITH TRAVEL

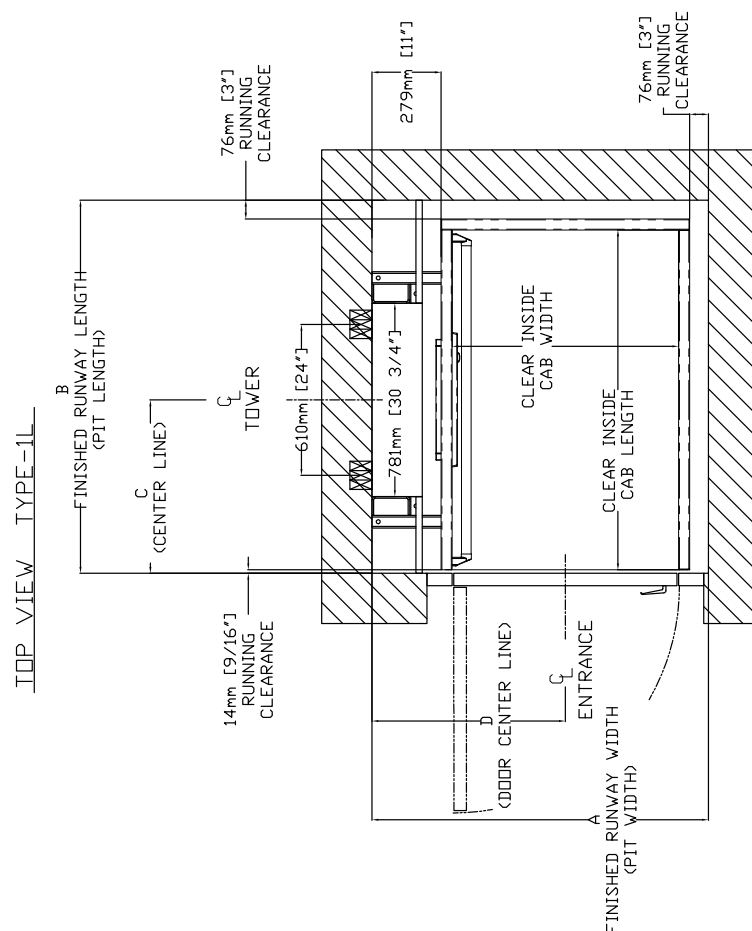


TABLE 2- HOISTWAY DIMENSION

A		B		C		D	
FINISHED RUNWAY WIDTH		FINISHED RUNWAY LENGTH		TOWER CENTER LINE		DOOR CENTER LINE (IN CASE OF 36" DOOR)	
mm	Inches	mm	Inches	mm	Inches	mm	Inches
1359	53 1/2	1354	53 5/16	924	37 9/16	781	30 3/4
1359	53 1/2	1354	53 5/16	924	37 9/16	781	30 3/4
1359	53 1/2	1354	53 5/16	924	37 9/16	781	30 3/4
1359	53 1/2	1354	53 5/16	924	37 9/16	781	30 3/4
1359	53 1/2	1354	53 5/16	924	37 9/16	781	30 3/4
1359	53 1/2	1354	53 5/16	924	37 9/16	781	30 3/4
1359	53 1/2	1354	53 5/16	924	37 9/16	781	30 3/4
1359	53 1/2	1354	53 5/16	924	37 9/16	781	30 3/4
1359	53 1/2	1354	53 5/16	924	37 9/16	781	30 3/4

Figure 12: Elevation and plan view, hoistway application (Type 1R)

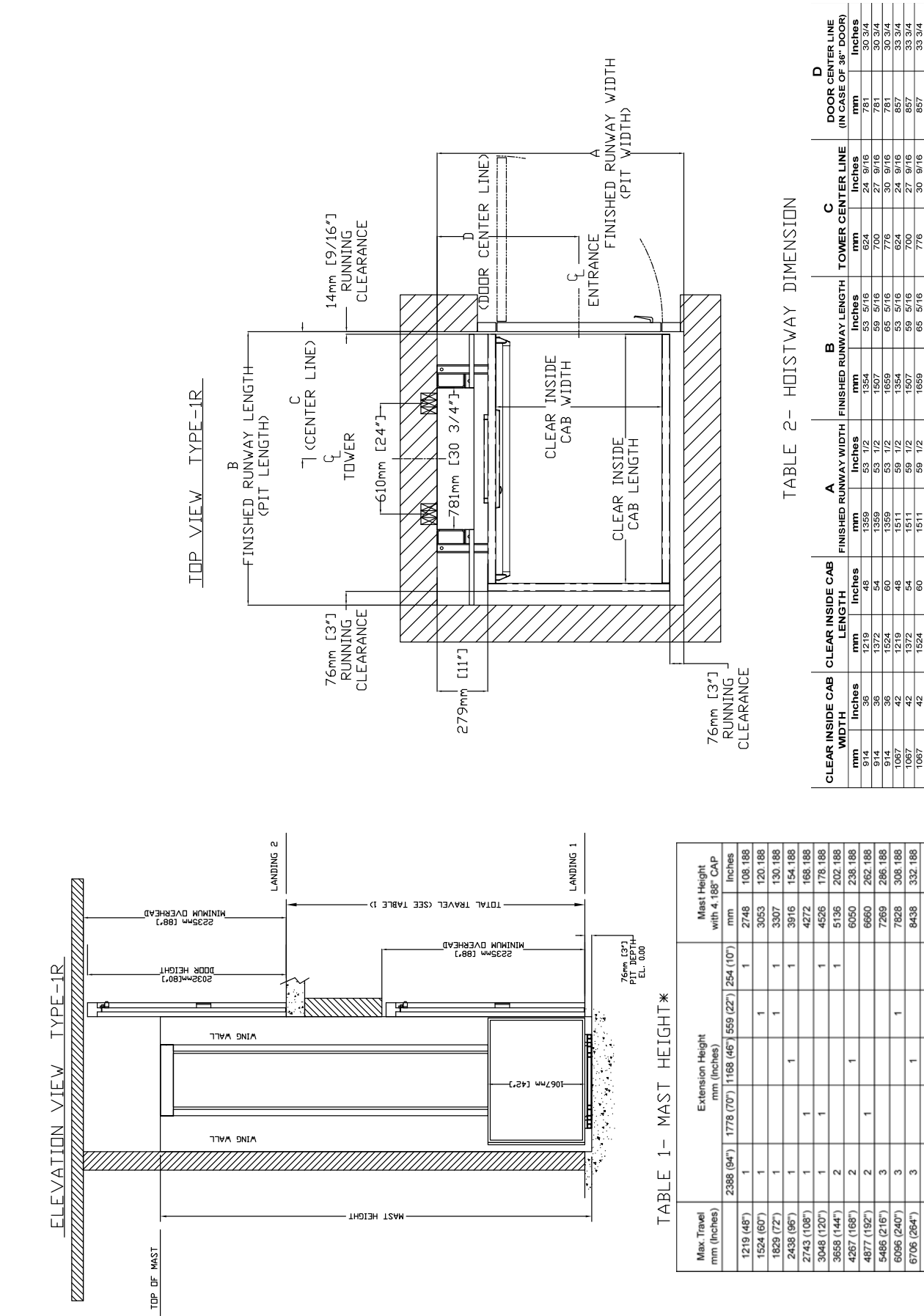


TABLE 1- MAST HEIGHT\*

Max Travel mm (inches)	Extension Height mm (inches)		Mast Height with 4.185' CAP mm (inches)	
2388 (94")	1	1778 (70")	1168 (46")	559 (22")
1219 (48")	1			254 (10")
1524 (60")	1		1	2748 (108.188)
1829 (72")	1		1	3053 (120.188)
2438 (96")	1		1	3307 (130.188)
2743 (108")	1		1	3916 (154.188)
3048 (120")	1		1	4272 (168.188)
3658 (144")	2		1	4526 (178.188)
4267 (168")	2		1	5135 (202.188)
4877 (192")	2		1	6050 (238.188)
5486 (216")	3		1	6660 (262.188)
6096 (240")	3		1	7269 (286.188)
6706 (264")	3		1	7828 (308.188)
				8438 (332.188)
7010 (276")	3		1	8692 (342.188)

\*EXAMPLE TABLE WITH 3' PIT, DIMENSIONS VARY WITH TRAVEL

TABLE 2- HOISTWAY DIMENSION

CLEAR INSIDE CAB WIDTH		CLEAR INSIDE CAB LENGTH		FINISHED RUNWAY WIDTH A		FINISHED RUNWAY LENGTH B		TOWER CENTER LINE C		DOOR CENTER LINE D (IN CASE OF 36" DOOR)	
mm	inches	mm	inches	mm	inches	mm	inches	mm	inches	mm	inches
914	36	1372	54	1389	55 1/2	1507	59 5/16	700	27 9/16	781	30 3/4
914	36	1524	60	1389	55 1/2	1659	65 5/16	776	30 9/16	781	30 3/4
1067	42	1219	48	1511	59 1/2	1354	53 5/16	624	24 9/16	857	33 3/4
1067	42	1372	54	1511	59 1/2	1507	59 5/16	700	27 9/16	857	33 3/4
1067	42	1524	60	1511	59 1/2	1659	65 5/16	776	30 9/16	857	33 3/4

**Figure 13: Elevation and plan view, hoistway application (Type 2)**

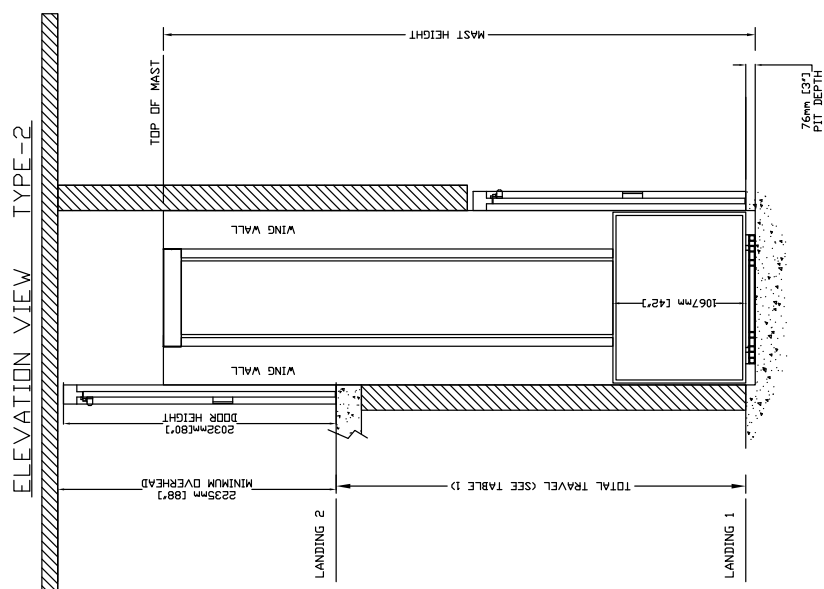


TABLE 1- MAST HEIGHT\*

Max. Travel mm (Inches)	Extension Height mm (Inches)				Mast Height with 4, 18° CAP mm (Inches)
	2388 (94")	1778 (70")	1166 (46")	559 (22")	
1219 (48")	1			1	2748 108 188
1524 (60")	1			1	3053 120 188
1829 (72")	1		1	1	3307 130 188
2438 (96")	1		1	1	3916 154 188
2743 (108")	1	1			4272 168 188
3048 (120")	1	1		1	4526 178 188
3658 (144")	2			1	5136 202 188
4267 (168")	2	1			6050 238 188
4877 (192")	2	1			6660 262 188
5486 (216")	3				7269 286 188
6096 (240")	3		1		7828 308 188
6706 (264")	3		1		8438 332 188

※EXAMPLE TABLE WITH 3" PIT, DIMENSIONS VARY WITH TRAVEL

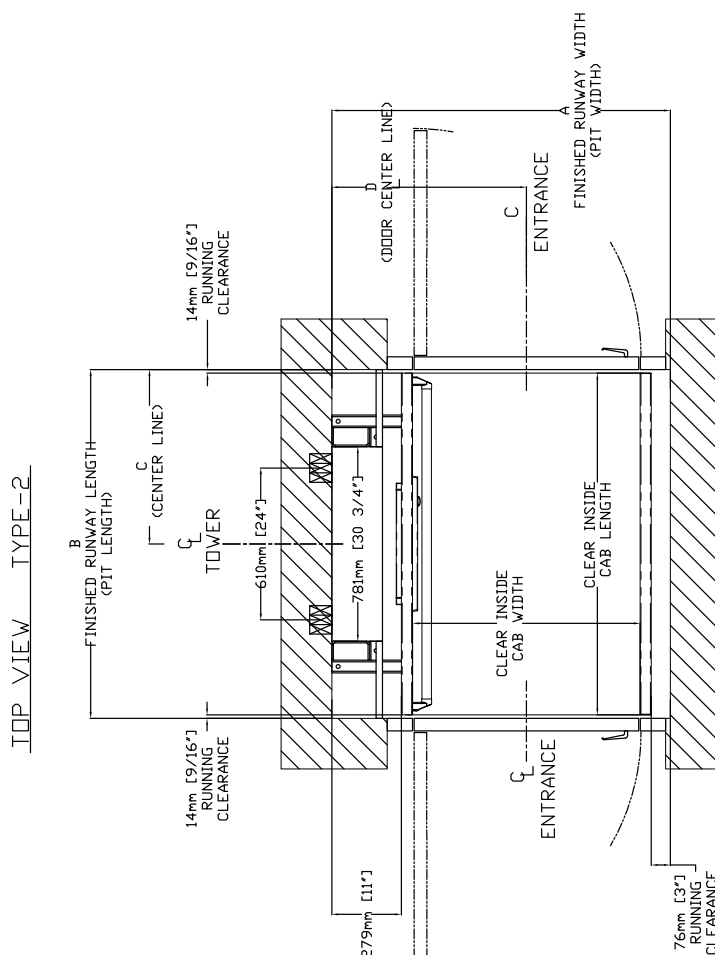


TABLE 2- HOISTWAY DIMENSION

CLEAR INSIDE CAB WIDTH		CLEAR INSIDE CAB LENGTH		A		B		C		D	
mm	Inches	mm	Inches	FINISHED RUNWAY WIDTH	FINISHED RUNWAY LENGTH	TOWER CENTER LINE	DOOR CENTER LINE	(IN CASE OF 36" DOOR)			
36	1219	48	1359	53 1/2	1248	49 1/8	624	24 9/16	781	30 3/4	
914	36	1372	54	1359	53 1/2	1400	55 1/8	700	27 9/16	781	30 3/4
914	36	1524	60	1359	53 1/2	1553	61 1/8	776	30 9/16	781	30 3/4
1067	42	1219	48	1511	59 1/2	1248	49 1/8	624	24 9/16	857	33 3/4
1067	42	1372	54	1511	59 1/2	1400	55 1/8	700	27 9/16	857	33 3/4

Figure 14: Elevation and plan view, hoistway application (Type 3)

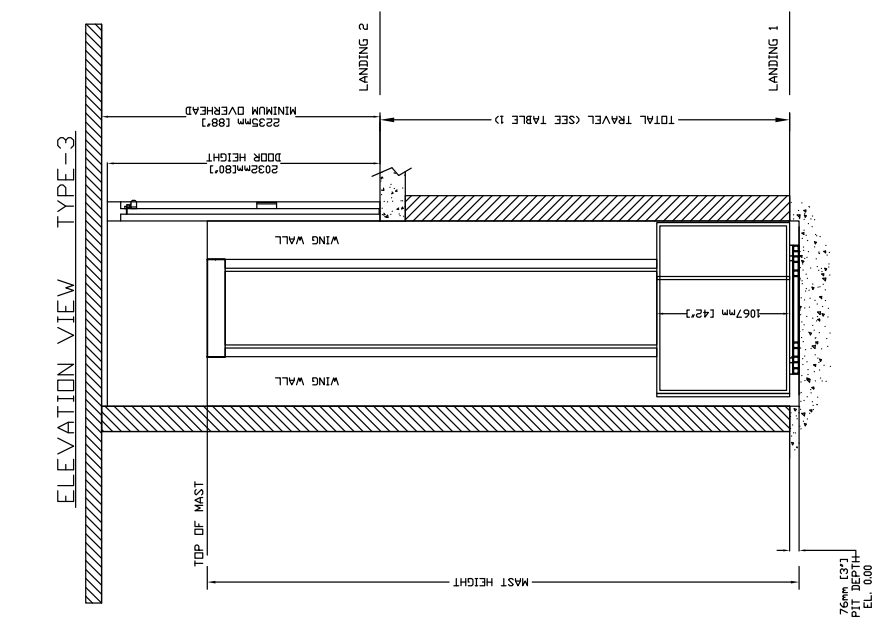


TABLE 1- MAST HEIGHT\*

Max Travel mm (inches)	Extension Height mm (inches)			Mast Height with 4.18' CAP mm (inches)	
	2388 (94")	1778 (70")	1168 (46")	559 (22")	254 (10")
1219 (48")	1				1
1524 (60")	1			1	
1829 (72")	1			1	1
2438 (96")	1		1		
2743 (108")	1	1			
3048 (120")	1	1		1	
3658 (144")	2				1
4267 (168")	2		1		
4877 (192")	3				
5486 (216")	3			1	
6096 (240")	3				1
6706 (264")	3		1		
7010 (276")	3		1		1

\*EXAMPLE TABLE WITH 3' PIT, DIMENSIONS VARY WITH TRAVEL

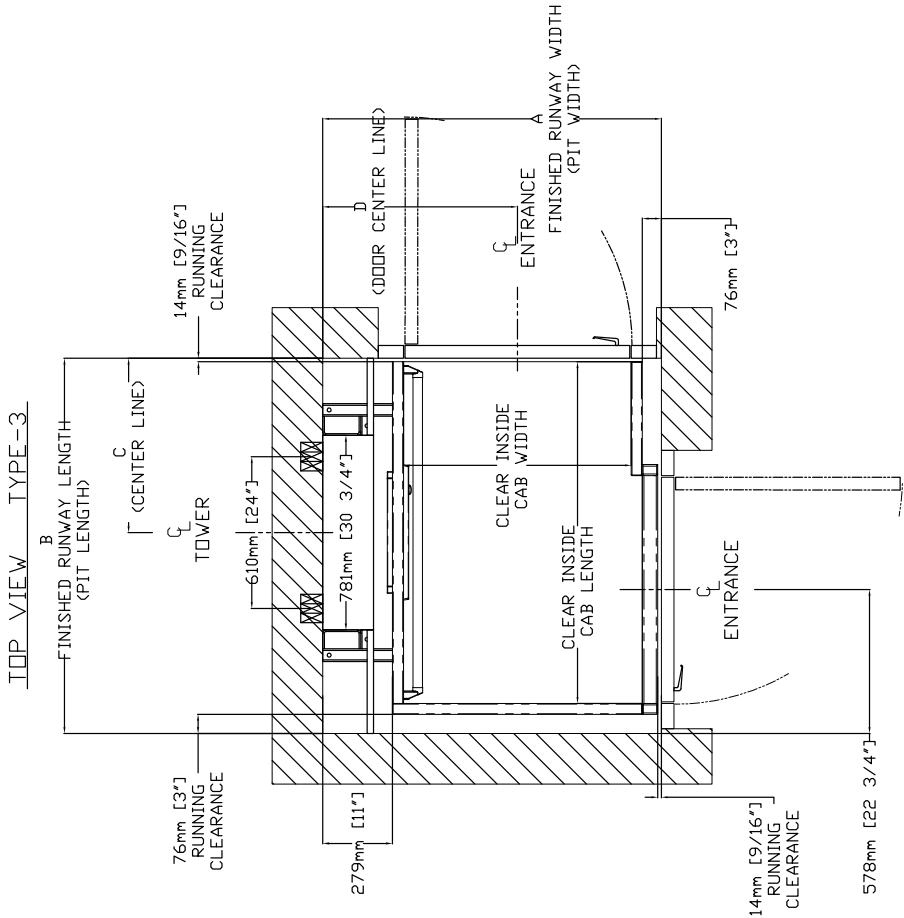


TABLE 2- HOISTWAY DIMENSION

CLEAR INSIDE CAB WIDTH		CLEAR INSIDE CAB LENGTH		FINISHED RUNWAY WIDTH		FINISHED RUNWAY LENGTH		TOWER CENTER LINE		DOOR CENTER LINE (IN CASE OF 36" DOOR)	
mm	inches	mm	inches	mm	inches	mm	inches	mm	inches	mm	inches
914	36	1219	48	1350	53 1/2	1350	53 1/2	27	9/16	781	30 3/4
914	36	1372	54	1359	53 1/2	1507	59 5/16	27	9/16	781	30 3/4
914	36	1524	60	1359	53 1/2	1659	65 5/16	27	9/16	781	30 3/4
1067	42	1219	48	1511	59 1/2	1354	53 5/16	24	9/16	857	33 3/4
1067	42	1372	54	1511	59 1/2	1507	59 5/16	27	9/16	857	33 3/4
1067	42	1524	60	1511	59 1/2	1659	65 5/16	27	9/16	857	33 3/4



**Figure 15: Elevation and plan view, hoistway application (Type 3, 45" opening)**

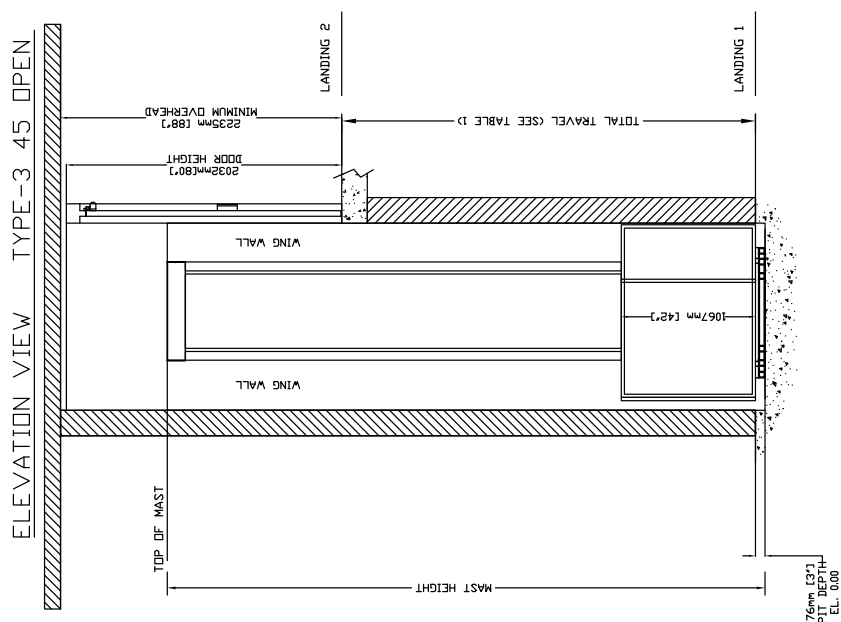
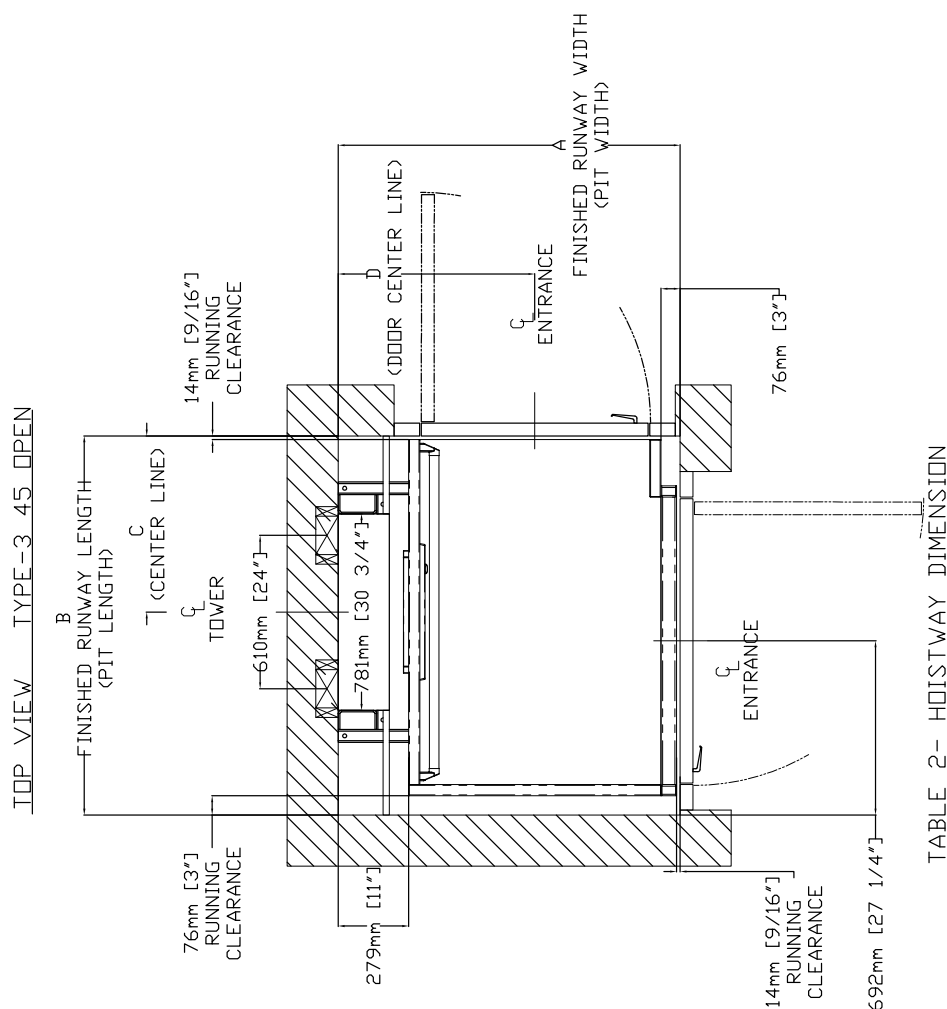


TABLE 1- MAST HEIGHT\*

Max. Travel mm (Inches)	Extension Height mm (Inches)				Max. Height with 4, 18" CAP
	2388 (94")	1778 (70")	1168 (46")	559 (22")	
1219 (48")	1			1	2748 108 188
1524 (60")	1		1		3063 120 188
1829 (72")	1		1	1	3307 130 188
2438 (96")	1	1		1	3916 154 188
2743 (108")	1	1	1		4272 168 188
3048 (120")	1	1		1	4526 178 188
3658 (144")	2			1	5136 202 188
4267 (168")	2	1			6050 238 188
4877 (192")	2	1			6660 262 188
5486 (216")	3				7269 286 188
6096 (240")	3		1		7828 308 188
6706 (264")	3	1		1	8438 332 188
7316 (288")	3	1	1		9048 356 188
7926 (312")	3	1	1	1	9658 380 188
8536 (336")	3	1	1	1	10268 404 188
9146 (360")	3	1	1	1	10878 428 188
9756 (384")	3	1	1	1	11488 452 188
10366 (408")	3	1	1	1	12098 476 188
10976 (432")	3	1	1	1	12708 500 188
11586 (456")	3	1	1	1	13318 524 188
12196 (480")	3	1	1	1	13928 548 188
12806 (504")	3	1	1	1	14538 572 188
13416 (528")	3	1	1	1	15148 596 188
14026 (552")	3	1	1	1	15758 620 188
14636 (576")	3	1	1	1	16368 644 188
15246 (600")	3	1	1	1	16978 668 188
15856 (624")	3	1	1	1	17588 692 188
16466 (648")	3	1	1	1	18198 716 188
17076 (672")	3	1	1	1	18808 740 188
17686 (696")	3	1	1	1	19418 764 188
18296 (720")	3	1	1	1	20028 788 188
18906 (744")	3	1	1	1	20638 812 188
19516 (768")	3	1	1	1	21248 836 188
20126 (792")	3	1	1	1	21858 860 188
20736 (816")	3	1	1	1	22468 884 188
21346 (840")	3	1	1	1	23078 908 188
21956 (864")	3	1	1	1	23688 932 188
22566 (888")	3	1	1	1	24298 956 188
23176 (912")	3	1	1	1	24908 980 188
23786 (936")	3	1	1	1	25518 1004 188
24396 (960")	3	1	1	1	26128 1028 188
25006 (984")	3	1	1	1	26738 1052 188
25616 (1008")	3	1	1	1	27348 1076 188
26226 (1032")	3	1	1	1	27958 1100 188
26836 (1056")	3	1	1	1	28568 1124 188
27446 (1080")	3	1	1	1	29178 1148 188
28056 (1104")	3	1	1	1	29788 1172 188
28666 (1128")	3	1	1	1	30398 1196 188
29276 (1152")	3	1	1	1	31008 1220 188
29886 (1176")	3	1	1	1	31618 1244 188
30496 (1200")	3	1	1	1	32228 1268 188
31106 (1224")	3	1	1	1	32838 1292 188
31716 (1248")	3	1	1	1	33448 1316 188
32326 (1272")	3	1	1	1	34058 1340 188
32936 (1296")	3	1	1	1	34668 1364 188
33546 (1320")	3	1	1	1	35278 1388 188
34156 (1344")	3	1	1	1	35888 1412 188
34766 (1368")	3	1	1	1	36498 1436 188
35376 (1392")	3	1	1	1	37108 1460 188
35986 (1416")	3	1	1	1	37718 1484 188
36596 (1440")	3	1	1	1	38328 1508 188
37206 (1464")	3	1	1	1	38938 1532 188
37816 (1488")	3	1	1	1	39548 1556 188
38426 (1512")	3	1	1	1	40158 1580 188
39036 (1536")	3	1	1	1	40768 1604 188
39646 (1560")	3	1	1	1	41378 1628 188
40256 (1584")	3	1	1	1	41988 1652 188
40866 (1608")	3	1	1	1	42598 1676 188
41476 (1632")	3	1	1	1	43208 1700 188
42086 (1656")	3	1	1	1	43818 1724 188
42696 (1680")	3	1	1	1	44428 1748 188
43306 (1704")	3	1	1	1	45038 1772 188
43916 (1728")	3	1	1	1	45648 1796 188
44526 (1752")	3	1	1	1	46258 1820 188
45136 (1776")	3	1	1	1	46868 1844 188
45746 (1800")	3	1	1	1	47478 1868 188
46356 (1824")	3	1	1	1	48088 1892 188
46966 (1848")	3	1	1	1	48698 1916 188
47576 (1872")	3	1	1	1	49308 1940 188
48186 (1896")	3	1	1	1	49918 1964 188
48796 (1920")	3	1	1	1	50528 1988 188
49406 (1944")	3	1	1	1	51138 2012 188
50016 (1968")	3	1	1	1	51748 2036 188
50626 (1992")	3	1	1	1	52358 2060 188
51236 (2016")	3	1	1	1	52968 2084 188
51846 (2040")	3	1	1	1	53578 2108 188
52456 (2064")	3	1	1	1	54188 2132 188
53066 (2088")	3	1	1	1	54798 2156 188
53676 (2112")	3	1	1	1	55408 2180 188
54286 (2136")	3	1	1	1	56018 2204 188
54896 (2160")	3	1	1	1	56628 2228 188
55506 (2184")	3	1	1	1	57238 2252 188
56116 (2208")	3	1	1	1	57848 2276 188
56726 (2232")	3	1	1	1	58458 2300 188
57336 (2256")	3	1	1	1	59068 2324 188
57946 (2280")	3	1	1	1	59678 2348 188
58556 (2304")	3	1	1	1	60288 2372 188
59166 (2328")	3	1	1	1	60898 2396 188
59776 (2352")	3	1	1	1	61508 2420 188
60386 (2376")	3	1	1	1	62118 2444 188
60996 (2400")	3	1	1	1	62728 2468 188
61606 (2424")	3	1	1	1	63338 2492 188
62216 (2448")	3	1	1	1	63948 2516 188
62826 (2472")	3	1	1	1	64558 2540 188
63436 (2496")	3	1	1	1	65168 2564 188
64046 (2520")	3	1	1	1	65778 2588 188
64656 (2544")	3	1	1	1	66388 2612 188
65266 (2568")	3	1	1	1	66998 2636 188
65876 (2592")	3	1	1	1	67608 2660 188
66486 (2616")	3	1	1	1	68218 2684 188
67096 (2640")	3	1	1	1	68828 2708 188
67706 (2664")	3	1	1	1	69438 2732 188
68316 (2688")	3	1	1	1	70048 2756 188
68926 (2712")	3	1	1	1	70658 2780 188
69536 (2736")	3	1	1	1	71268 2804 188
70146 (2760")	3	1	1	1	71878 2828 188
70756 (2784")	3	1	1	1	72488 2852 188
71366 (2808")	3	1	1	1	73098 2876 188
71976 (2832")	3	1	1	1	73708 2900 188
72586 (2856")	3	1	1	1	74318 2924 188
73196 (2880")	3	1	1	1	74928 2948 188
73806 (2904")	3	1	1	1	75538 2972 188
74416 (2928")	3	1	1	1	76148 2996 188
75026 (2952")	3	1	1	1	76758 3020 188
75636 (2976")	3	1	1	1	77368 3044 188
76246 (3000")	3	1	1	1	77978 3068 188
76856 (3024")	3	1	1	1	78588 3092 188
77466 (3048")	3	1	1	1	79198 3116 188
78076 (3072")	3	1	1	1	79808 3140 188
78686 (3096")	3	1	1	1	80418 3164 188
79296 (3120")	3	1	1	1	81028 3188 188
79906 (3144")	3	1	1	1	81638 3212 188
80516 (3168")	3	1	1	1	82248 3236 188
81126 (3192")	3	1	1	1	82858 3260 188
81736 (3216")	3	1	1	1	83468 3284 188
82346 (3240")	3	1	1	1	84078 3308 188
82956 (3264")	3	1	1	1	84688 3332 188
83566 (3288")	3	1	1	1	85298 3356 188
84176 (3312")	3	1	1	1	85908 3380 188
84786 (3336")	3	1	1	1	86518 3404 188
85396 (3360")	3	1	1	1	87128 3428 188
86006 (3384")	3	1	1	1	87738 3452 188
86616 (3408")	3	1	1	1	88348 3476 188
87226 (3432")	3	1	1	1	88958 3500 188
87836 (3456")	3	1	1	1	89568 3524 188
88446 (3480")	3	1	1	1	90178 3548 188
89056 (3504")	3	1	1	1	90788 3572 188
89666 (3528")	3	1	1	1	91398 3596 188
90276 (3552")	3	1	1	1	92008 3620 188
90886 (3576")	3	1	1	1	92618 3644 188
91496 (3600")	3	1	1	1	93228 3668 188
92106 (3624")	3	1	1	1	93838 3692 188
92716 (3648")	3	1	1	1	94448 3716 188
93326 (3672")	3	1	1	1	95058 3740 188
93936 (3696")	3	1	1	1	95668 3764 188
94546 (3720")	3	1	1	1	96278 3788 188
95156 (3744")	3	1	1	1	96888 3812 188
95766 (3768")	3	1	1	1	97498 3836 188
96376 (3792")	3	1	1	1	98108 3860 188
96986 (3816")	3	1	1	1	98718 3884 188
97596 (3840")	3	1	1	1	99328 3908 188
98206 (3864")	3	1	1	1	99938 3932 188
98816 (3888")	3	1	1	1	100548 3956 188
99426 (3912")	3	1	1	1	101158 3980 188
100036 (3936")	3	1	1	1	101768 4004 188
100646 (3960")	3	1	1	1	102378 4028 188
101256 (3984")	3	1	1	1	102988 4052 188
101866 (4008")	3	1	1	1	103598 4076 188
102476 (4032")	3	1	1	1	104208 4100 188
103086 (4056")	3	1	1	1	104818 4124 188
103696 (4080")	3	1	1	1	105428 4148 188
104306 (4104")	3	1	1	1	106038 4172 188
104916 (4128")	3	1	1	1	106648 4196 188
105526 (4152")	3	1	1	1	107258 4220 188
106136 (4176")	3	1	1	1	107868 4244 188
106746 (4200")	3	1	1	1	108478 4268 188
107356 (4224")	3	1	1	1	109088 4292 188
107966 (4248")	3	1	1	1	109698 4316 188
108576 (4272")	3	1	1	1	110308 4340 188
109186 (4296")	3	1	1	1	110918 4364 188
109796 (4320")	3	1	1	1	111528 4388 188
110406 (4344")	3	1	1	1	112138 4412 188
111016 (4368")	3	1	1	1	112748 4436 188
111626 (4392")	3	1	1	1	113358 4460 188
112236 (4416")	3	1	1	1	113968 4484 188
112846 (4440")	3	1	1	1	114578 4508 188
113456 (4464")	3	1	1	1	115188 4532 188
114066 (4488")	3	1	1	1	115798 4556 188
114676 (4512")	3	1	1	1	116408 4580 188
115286 (4536")	3	1	1	1	117018 4604 188
115896 (4560")	3	1	1	1	117628 4628 188
116506 (4584")	3	1	1	1	118238 4652 188
117116 (4608")	3	1	1	1	118848 4676 188
117726 (4632")	3	1	1	1	119458 4700 188
118336 (4656")	3	1	1	1	120068 4724 188
118946 (4680")	3	1	1	1	120678 4748 188
119556 (4					

\*EXAMPLE TABLE WITH 3" PIT, DIMENSIONS VARY WITH TRAVEL

TABLE 2- HOISTWAY DIMENSION U

	CLEAR INSIDE CAB WIDTH		CLEAR INSIDE CAB LENGTH		A		B		C		D	
	mm	Inches	mm	Inches	FINISHED RUNWAY WIDTH		FINISHED RUNWAY LENGTH		TOWER CENTER LINE			
DOOR CENTER LINE (IN CASE OF 36" DOOR)	mm	Inches	mm	Inches	mm	Inches	mm	Inches	mm	Inches	mm	Inches
	914	36	1219	48	1359	53 1/2	1354	53 5/16	924	36 1/8	781	30 3/4
	914	36	1219	48	1359	53 1/2	1354	53 5/16	924	36 1/8	781	30 3/4
	914	36	1219	48	1359	53 1/2	1354	53 5/16	924	36 1/8	781	30 3/4
	914	36	1219	48	1359	53 1/2	1354	53 5/16	924	36 1/8	781	30 3/4
DOOR CENTER LINE (IN CASE OF 36" DOOR)	1067	42	1219	48	1511	59 1/2	1354	53 5/16	924	36 1/8	857	33 3/4
	1067	42	1372	54	1511	59 1/2	1507	59 5/16	700	27 9/16	857	33 3/4
	1067	42	1372	54	1511	59 1/2	1507	59 5/16	700	27 9/16	857	33 3/4
	1067	42	1372	54	1511	59 1/2	1507	59 5/16	700	27 9/16	857	33 3/4
	1067	42	1524	60	1511	59 1/2	1507	59 5/16	776	30 9/16	857	33 3/4

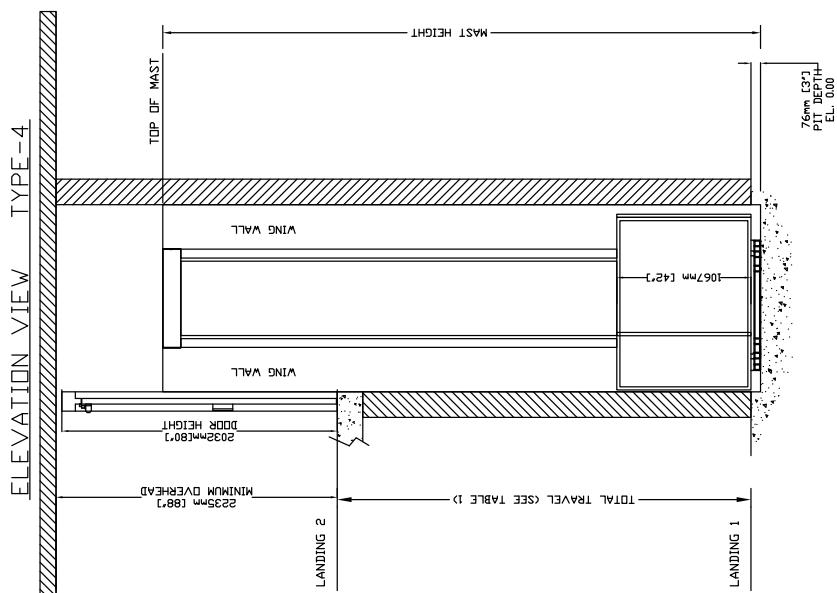


TABLE 1- MAST HEIGHT\*

Max. Travel mm (inches)	Extension Height mm (inches)					Mast Height with 4, 180° CAP	
	2388 (94")	1778 (70")	1168 (46")	559 (22")	254 (10")	mm	Inches
1219 (48")	1				1	2748	108.188
1524 (60")	1			1		3053	120.188
1829 (72")	1			1	1	3307	130.188
2438 (96")	1		1		1	3916	154.188
2743 (108")	1		1			4272	168.188
3048 (120")	1		1		1	4526	178.188
3658 (144")	2				1	5136	202.188
4267 (168")	2		1			6050	238.188
4877 (192")	2		1			6960	262.188
5486 (216")	3					7269	286.188
6096 (240")	3			1		7928	308.188
6706 (264")	3		1			8438	332.188
7316 (288")	3		1		1	8602	342.188

\*EXAMPLE TABLE WITH 3" PIT, DIMENSIONS VARY WITH TRAVEL

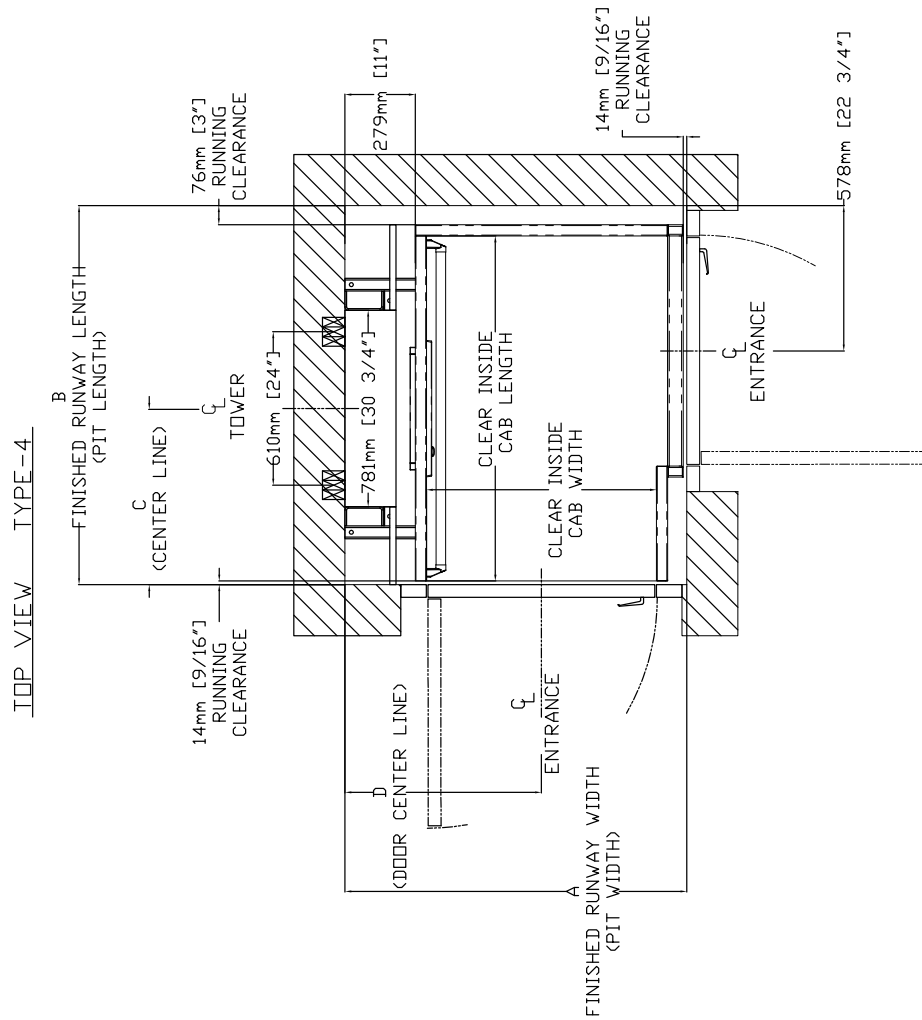


TABLE 2- HOISTWAY DIMENSION

CLEAR INSIDE CAB WIDTH		CLEAR INSIDE CAB LENGTH		A		B		C		D		
mm	Inches	mm	Inches	FINISHED RUNWAY WIDTH	FINISHED RUNWAY LENGTH	mm	Inches	mm	Inches	mm	Inches	
914	36	1219	48	1359	53 1/2	1354	53	5716	24	9/16	781	30 3/4
914	36	1372	54	1359	53 1/2	1507	59	5716	700	27 9/16	781	30 3/4
914	36	1524	60	1359	53 1/2	1659	65	5716	776	30 9/16	781	30 3/4
1067	42	1219	48	1311	51	1354	53	5716	524	24 9/16	857	33 3/4
1067	42	1372	54	1311	51	1507	59	5716	600	24 9/16	857	33 3/4
1067	42	1524	60	1311	51	1659	65	5716	676	30 9/16	857	33 3/4

**Figure 17: Elevation and plan view, hoistway application (Type 4, 45" opening)**

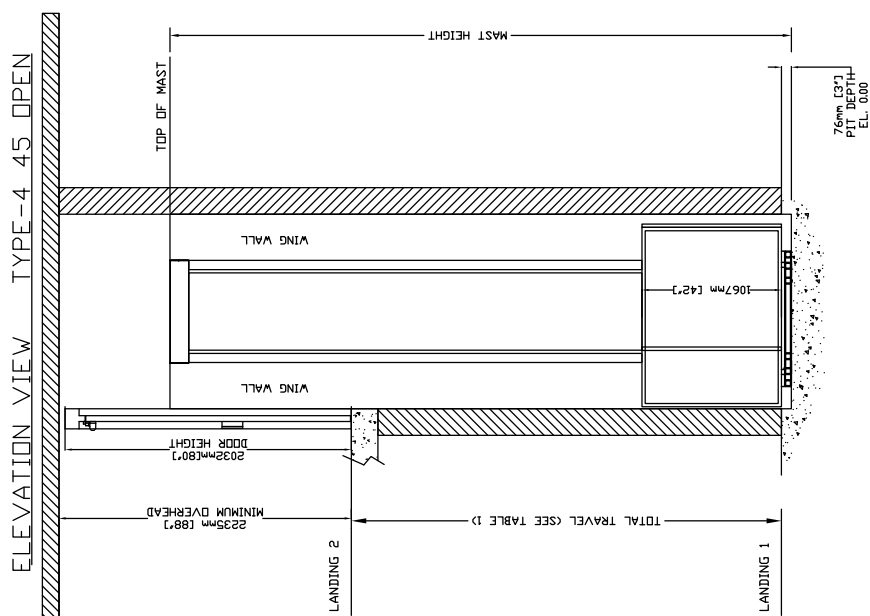


TABLE 1- MAST HEIGHT\*

Max. Travel mm (Inches)	Extension Height mm (Inches)				Mast Height with 4.188" CAP
	2388 (94")	1778 (70")	1168 (46")	559 (22")	
1219 (48")	1			1	2748 108.188
1524 (60")	1		1		3053 120.188
1829 (72")	1		1	1	3307 130.188
2438 (96")	1		1	1	3912 154.188
2743 (108")	1	1			4276 168.188
3048 (120")	1	1		1	4526 178.188
3658 (144")	2			1	5136 202.188
4267 (168")	2		1		6050 238.188
4877 (192")	2	1			6660 262.188
5486 (216")	3				7269 286.188
6096 (240")	3		1	1	7828 308.188
6706 (264")	3		1		8438 332.188
7316 (288")	3		1	1	9048 356.188

\*EXAMPLE TABLE WITH 3" PIT, DIMENSIONS VARY WITH TRAVEL

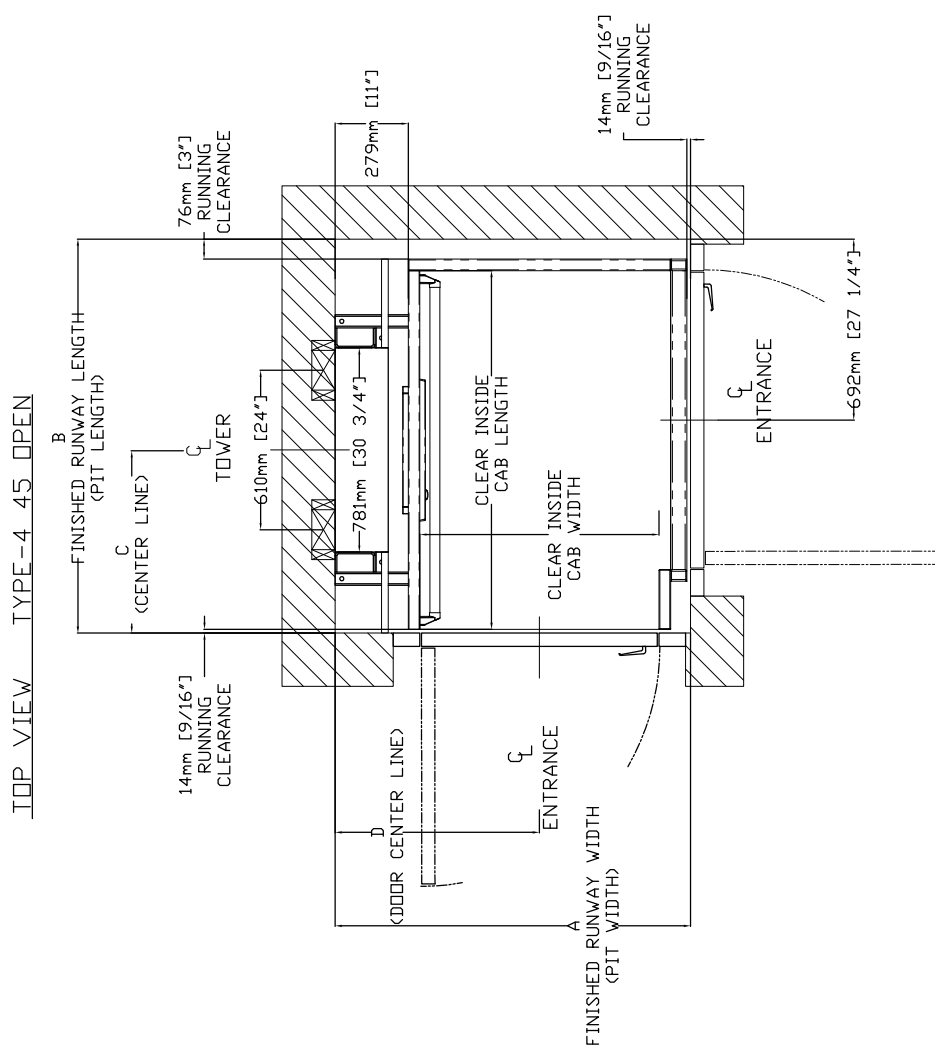
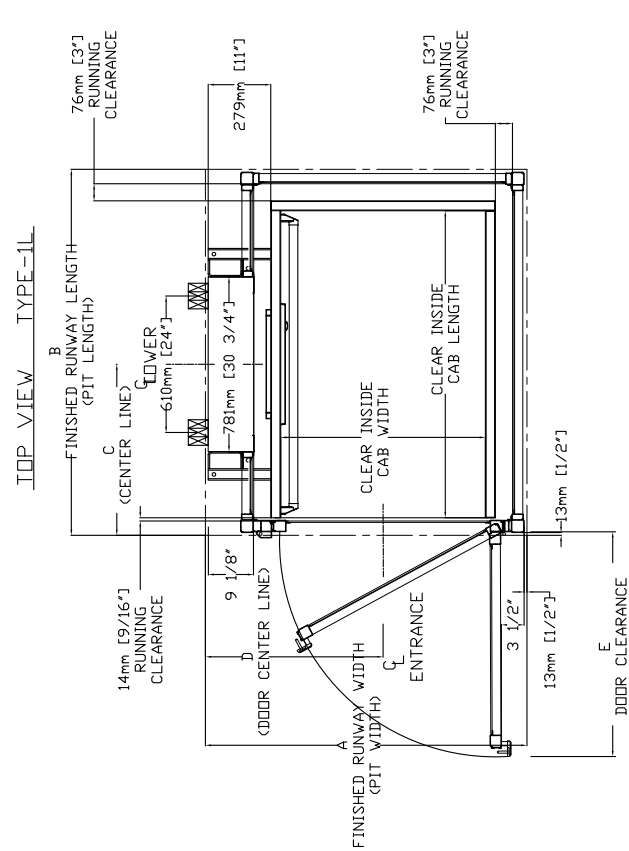


TABLE 2- HOISTWAY DIMENSION

CLEAR INSIDE CAB WIDTH		CLEAR INSIDE CAB LENGTH		A		B		C		D	
mm	Inches	mm	Inches	FINISHED RUNWAY WIDTH	FINISHED RUNWAY LENGTH	TOWER CENTER LINE	DOOR CENTER LINE	(IN CASE OF 36" DOOR)			
		mm	Inches	mm	Inches	mm	Inches	mm	Inches	mm	Inches
914	36	1219	48	1359	53 1/2	1354	53 5/16	624	24 9/16	781	30 3/4
914	36	1372	54	1359	53 1/2	1507	59 5/16	770	30 3/4	781	30 3/4
914	36	1524	60	1359	53 1/2	1659	65 5/16	776	30 9/16	781	30 3/4
1087	42	1219	48	1511	59 1/2	1354	53 5/16	624	24 9/16	857	33 3/4
1087	42	1372	54	1511	59 1/2	1507	59 5/16	700	27 9/16	857	33 3/4
1087	42	1524	60	1511	59 1/2	1659	65 5/16	706	27 9/16	857	33 3/4

Figure 18: Elevation and plan view, enclosure application (Type 1L)



TYPICAL ENCLOSURE WITH EXTENSION & CLEAR PLEXIGLASS DOME & VENTILATION SYSTEM & DOOR OPERATOR

TABLE 1- MAST HEIGHT\*

Max. Travel mm (Inches)	Extension Height mm (Inches)		Mast Height Approx with Gate with 4.188" CAP	
2388 (94")	1778 (70")	1168 (46")	559 (22")	254 (10")
1219 (48")	1	1	1	2748
1524 (60")	1	1	1	3053
1829 (72")	1	1	1	3662
2438 (96")	1	1	1	4272
2743 (108")	1	1	1	4272
3048 (120")	2	1	1	4882
3658 (144")	2	2	1	5440
4267 (168")	2	1	1	6050
4877 (192")	2	1	1	6660
5486 (216")	3	1	1	7269
6096 (240")	3	1	1	7828
6706 (264")	3	1	1	8438
7010 (276")	3	1	1	8692

\*EXAMPLE TABLE WITH 3" PIT, DIMENSIONS VARY WITH TRAVEL

TABLE 2 - ENCLOSURE DIMENSION

CLEAR INSIDE CAB		CLEAR INSIDE CAB		FINISHED RUNWAY WIDTH		FINISHED RUNWAY LENGTH		TOWER CENTER LINE		DOOR COVER LINE (IN CASE OF 36" DOOR)		DOOR CLEARANCE	
mm	Inches	mm	Inches	mm	Inches	mm	Inches	mm	Inches	mm	Inches	mm	Inches
914	36	1219	48	1437	56 9/16	1483	58 3/8	687	27 1/16	794	31 1/4	1100	43 5/16
914	36	1372	54	1437	56 9/16	1635	64 3/8	794	30 1/16	794	31 1/4	1100	43 5/16
914	36	1524	60	1437	56 9/16	1788	70 3/8	840	33 1/16	794	31 1/4	1100	43 5/16
1007	42	1219	48	1589	62 9/16	1483	58 3/8	687	27 1/16	870	34 1/4	1253	49 5/16
1007	42	1219	48	1589	62 9/16	1635	64 3/8	794	30 1/16	870	34 1/4	1253	49 5/16
1007	42	1524	60	1589	62 9/16	1788	70 3/8	840	33 1/16	870	34 1/4	1253	49 5/16

Figure 19: Elevation and plan view, enclosure application (Type 1R)

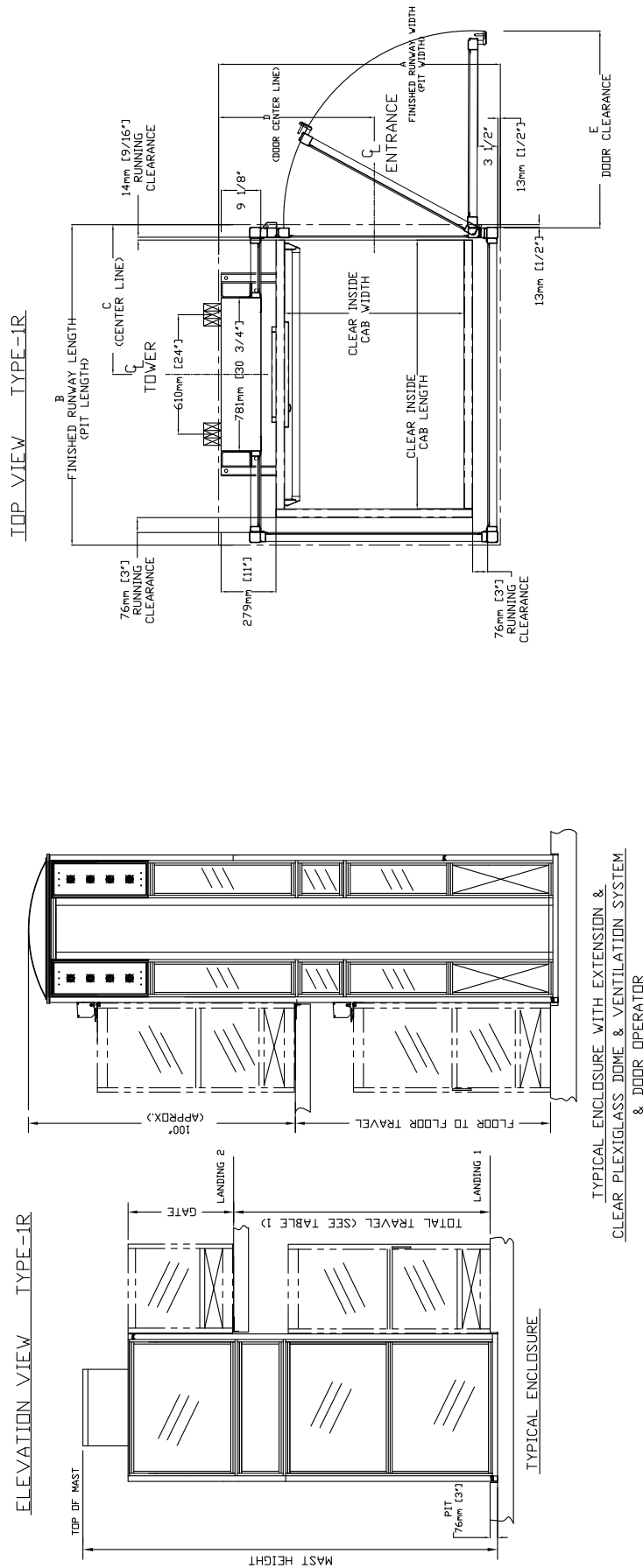


TABLE 1- MAST HEIGHT\*

Max. Travel mm (inches)	Extension Height mm (inches)	Mast Height Approx with Gate with 4.188" CAP mm (inches)
1219 (48")	1	2748 108.188
1524 (60")	1	3053 120.188
1829 (72")	1	3662 144.188
2438 (96")	1	4272 168.188
2743 (108")	1	4272 168.188
3048 (120")	2	4882 192.188
3658 (144")	2	5440 214.188
4267 (168")	2	6050 238.188
4877 (192")	2	6660 262.188
5486 (216")	3	7269 286.188
6096 (240")	3	7828 308.188
6706 (264")	3	8438 332.188
7010 (276")	3	8692 342.188

\*EXAMPLE TABLE WITH 3" PIT. DIMENSIONS VARY WITH TRAVEL

TABLE 2 - ENCLOSURE DIMENSION

CLEAR INSIDE CAB		CLEAR INSIDE CAB		A		B		C		D		E	
mm	inches	mm	inches	FINISHED RUNWAY WIDTH	FINISHED RUNWAY LENGTH	FINISHED RUNWAY WIDTH	FINISHED RUNWAY LENGTH	TOWER CENTER LINE	TOWER CENTER LINE	DOOR CENTER LINE (IN CASE OF 30" DOOR)	DOOR CENTER LINE	DOOR CLEARANCE	DOOR CLEARANCE
914	36	1219	48	1437	1433	1433	1433	657	657	761	30 1/4	1100	43 5/16
914	36	1312	54	1437	1535	1535	1535	657	657	761	31 1/4	1100	43 5/16
914	36	1524	60	1437	1788	1788	1788	657	657	761	31 1/4	1100	43 5/16
1067	42	1219	48	1589	1433	1433	1433	840	840	870	34 1/4	1253	49 5/16
1067	42	1524	60	1589	1788	1788	1788	840	840	870	34 1/4	1253	49 5/16

Figure 20: Elevation and plan view, enclosure application (Type 2)

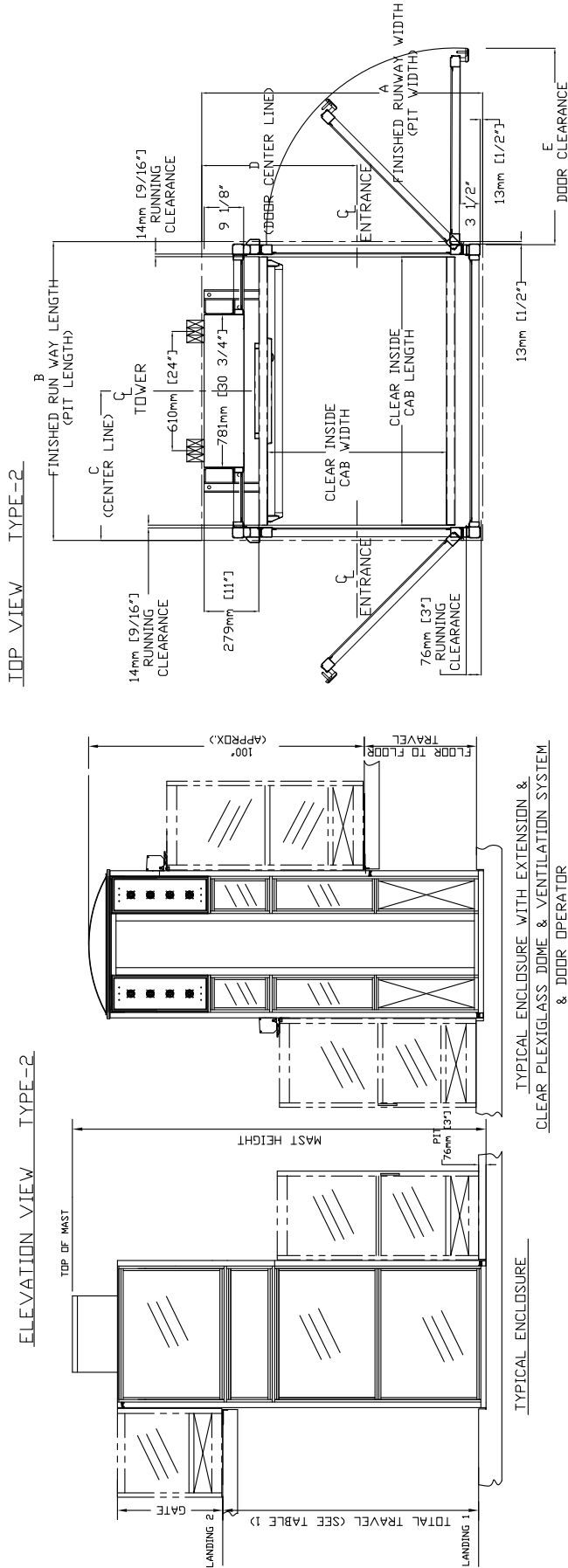


TABLE 1- MAST HEIGHT\*

Max. Travel mm (inches)	Extension Height mm (inches)		Mast Height Approx with Gate with 4.18\" CAP	
	2388 (94\")	1778 (70\")	1168 (46\")	559 (22\")
1219 (48\")	1	1	1	1
1524 (60\")	1	1	1	1
1829 (72\")	1	1	1	1
2438 (96\")	1	1	1	1
2743 (108\")	1	1	1	1
3048 (120\")	2	1	1	1
3658 (144\")	2	1	1	1
4267 (168\")	2	1	1	1
4877 (192\")	2	1	1	1
5486 (216\")	3	1	1	1
6096 (240\")	3	1	1	1
6706 (264\")	3	1	1	1
7010 (276\")	3	1	1	1

\*EXAMPLE TABLE WITH 3\" PIT, DIMENSIONS VARY WITH TRAVEL

TABLE 2 - ENCLOSURE DIMENSION

CLEAR INSIDE CAB		CLEAR INSIDE CAB		FINISHED RUNWAY WIDTH		FINISHED RUNWAY LENGTH		TOWER CENTER LINE		DOOR CENTER LINE (IN CASE OF 36\" DOOR)		DOOR CLEARANCE	
mm	Inches	mm	Inches	mm	Inches	mm	Inches	mm	Inches	mm	Inches	mm	Inches
914	36	1219	48	1437	56 9/16	1376	54 3/16	687	27 1/8	794	31 1/4	1100	43 5/16
914	36	1372	54	1437	56 9/16	1529	60 3/16	764	30 1/16	794	31 1/4	1100	43 5/16
914	36	1524	60	1437	56 9/16	1681	66 3/16	840	33 1/16	794	31 1/4	1100	43 5/16
1067	42	1219	48	1589	62 9/16	1376	54 3/16	687	27 1/8	870	34 1/4	1253	49 5/16
1067	42	1372	54	1589	62 9/16	1529	60 3/16	764	30 1/16	870	34 1/4	1253	49 5/16
1067	42	1524	60	1589	62 9/16	1681	66 3/16	840	33 1/16	870	34 1/4	1253	49 5/16



Figure 22: Elevation and plan view, enclosure application (Type 4, 45" opening)

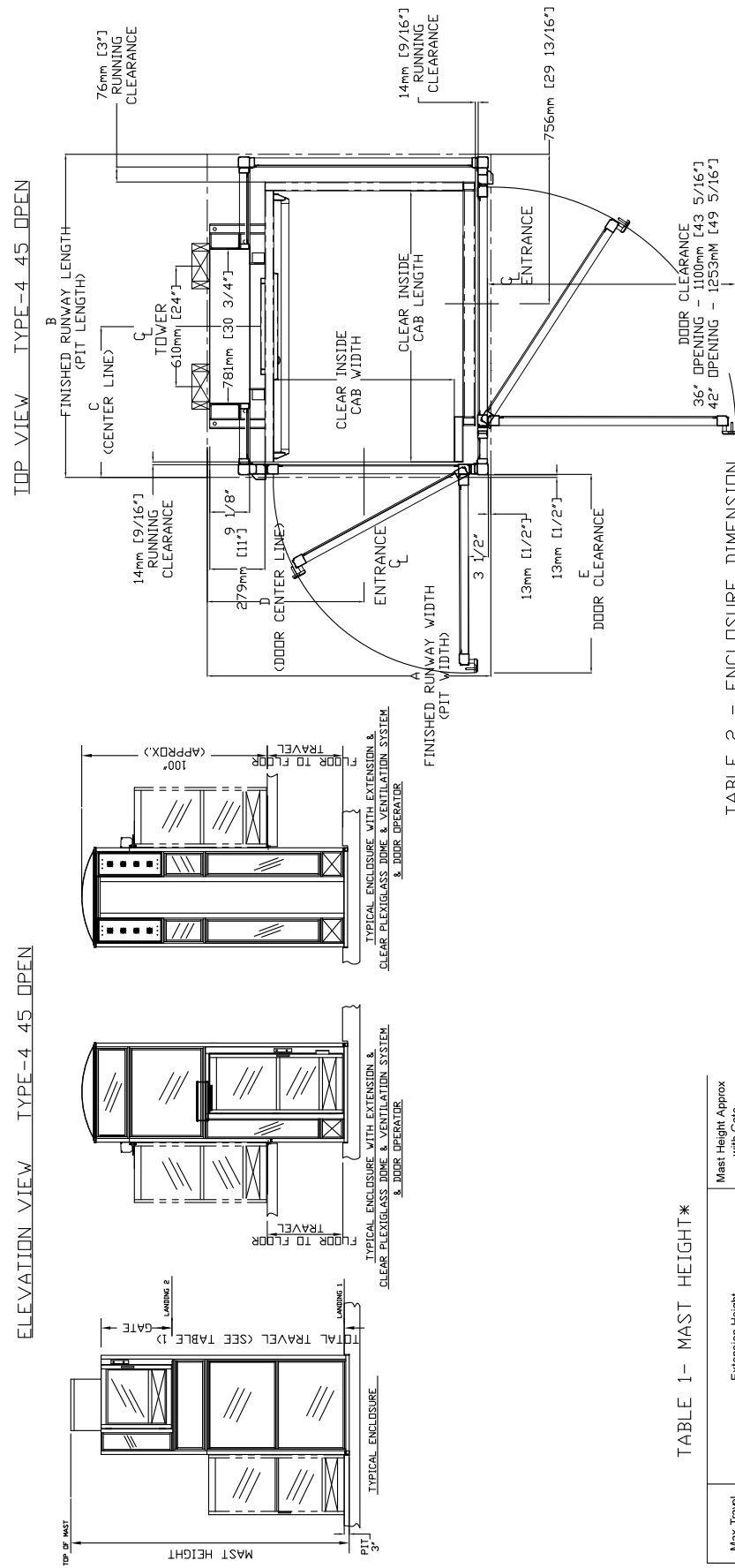


TABLE 1- MAST HEIGHT\*

Max. Travel mm (Inches)	Extension Height mm (Inches)	Mast Height Approx with Gate with 4.188" CAP mm (Inches)
2388 (94")	1778 (70")	1188 (46")
1219 (48")	1	2748 (108")
1524 (60")	1	3053 (120")
1829 (72")	1	3652 (144")
2438 (96")	1	4272 (168")
2743 (108")	1	4882 (192")
3048 (120")	2	5440 (214")
3658 (144")	2	6050 (238")
4267 (168")	2	6660 (262")
4877 (192")	3	7269 (286")
5486 (216")	3	7828 (308")
6096 (240")	3	8438 (332")
6706 (264")	3	8992 (356")
7316 (288")	3	9592 (380")

\*EXAMPLE TABLE WITH 3" PIT, DIMENSIONS VARY WITH TRAVEL



**Figure 23: Auto door, left-hand**

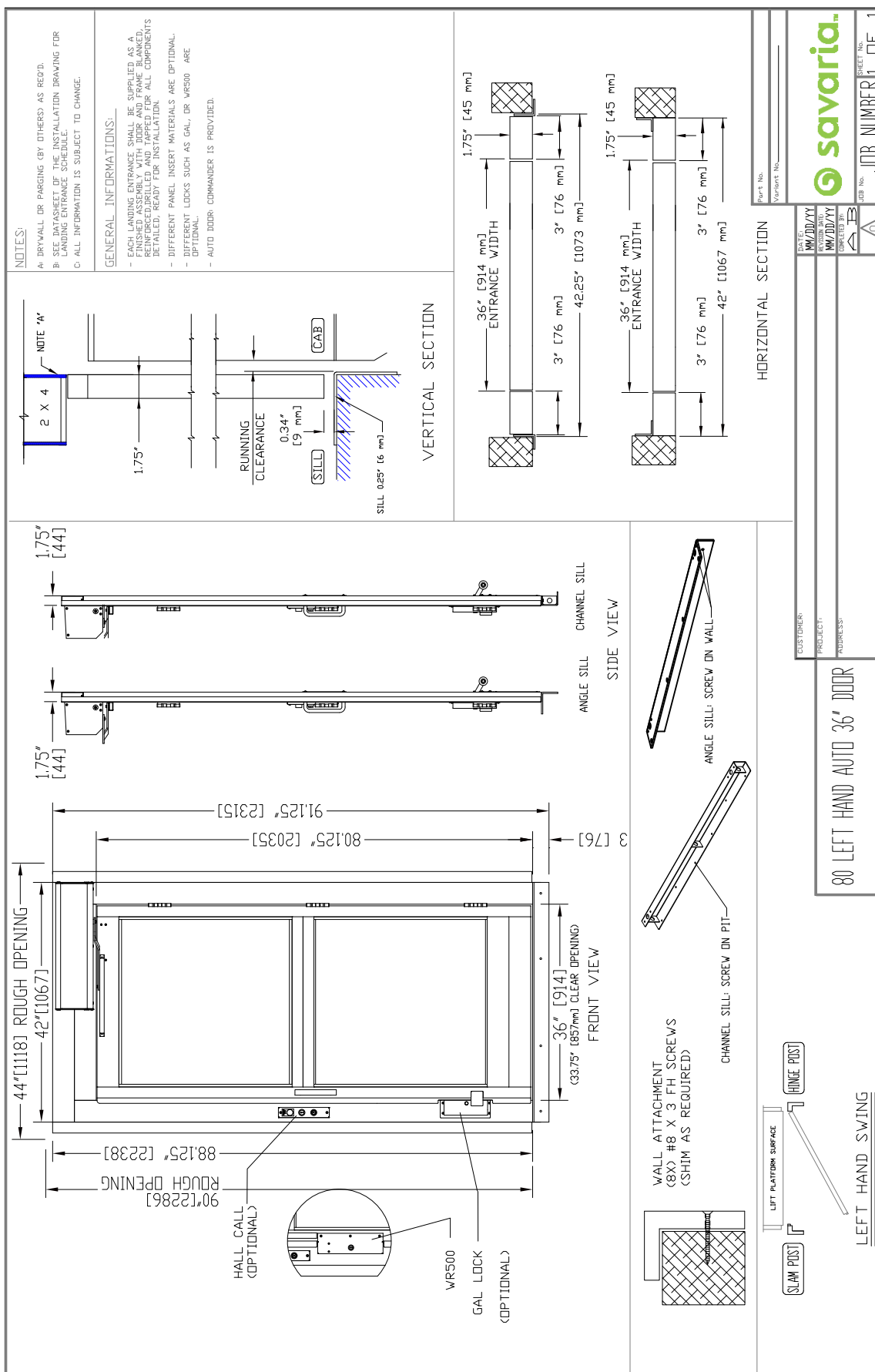


Figure 24: Auto door, right-hand

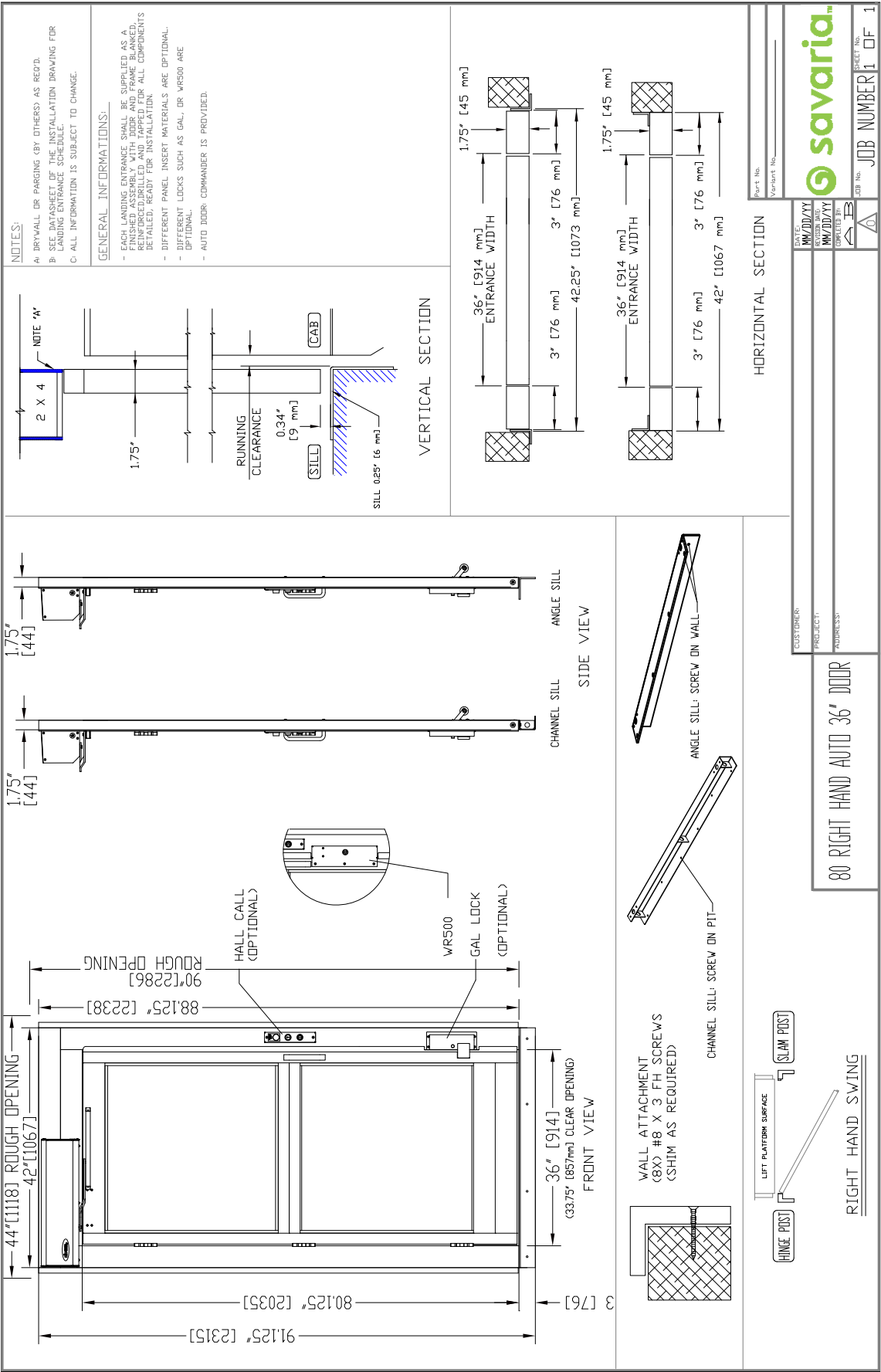
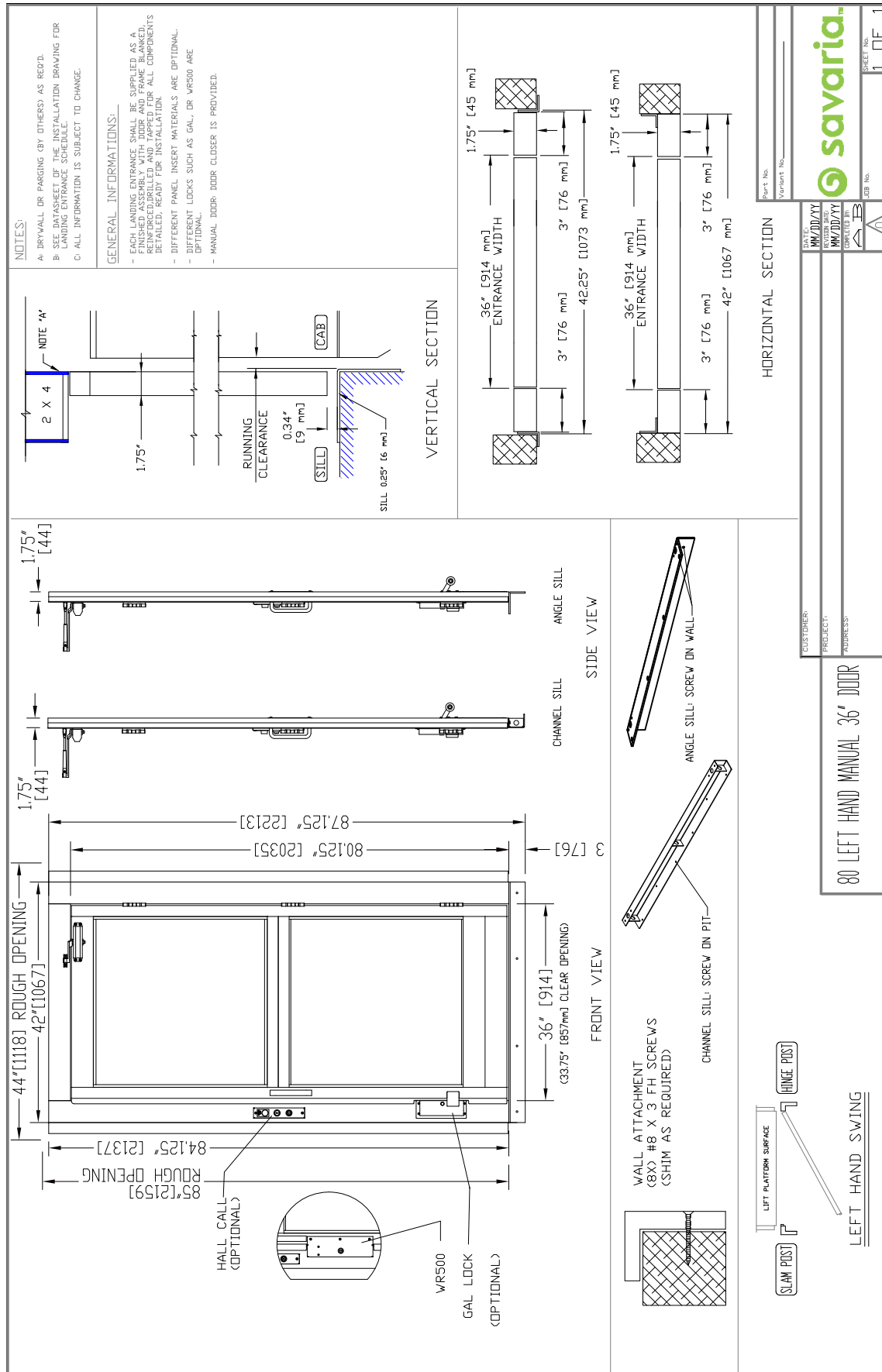


Figure 25: Manual door, left-hand



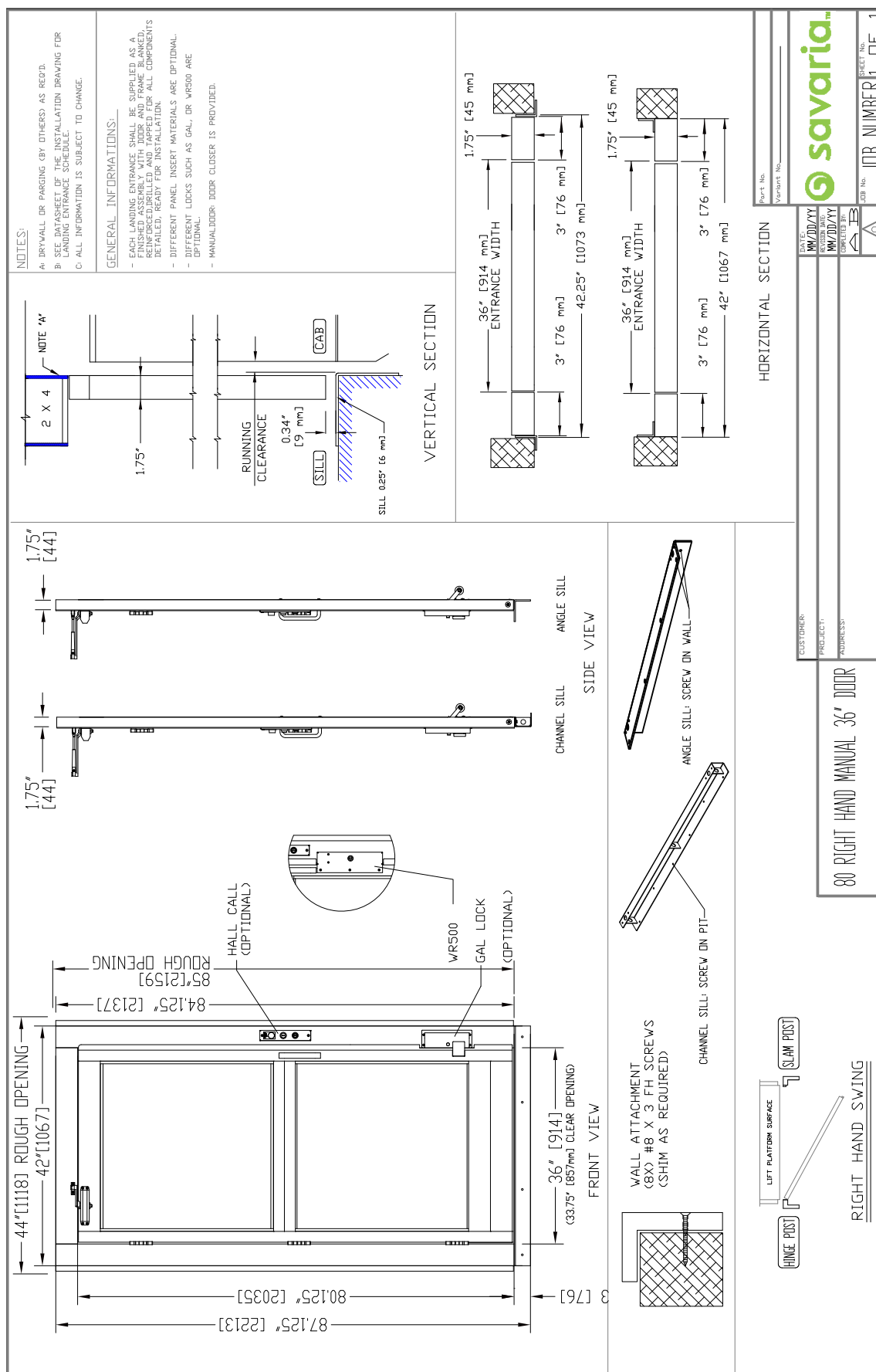


Figure 27: Prodoor auto, left-hand

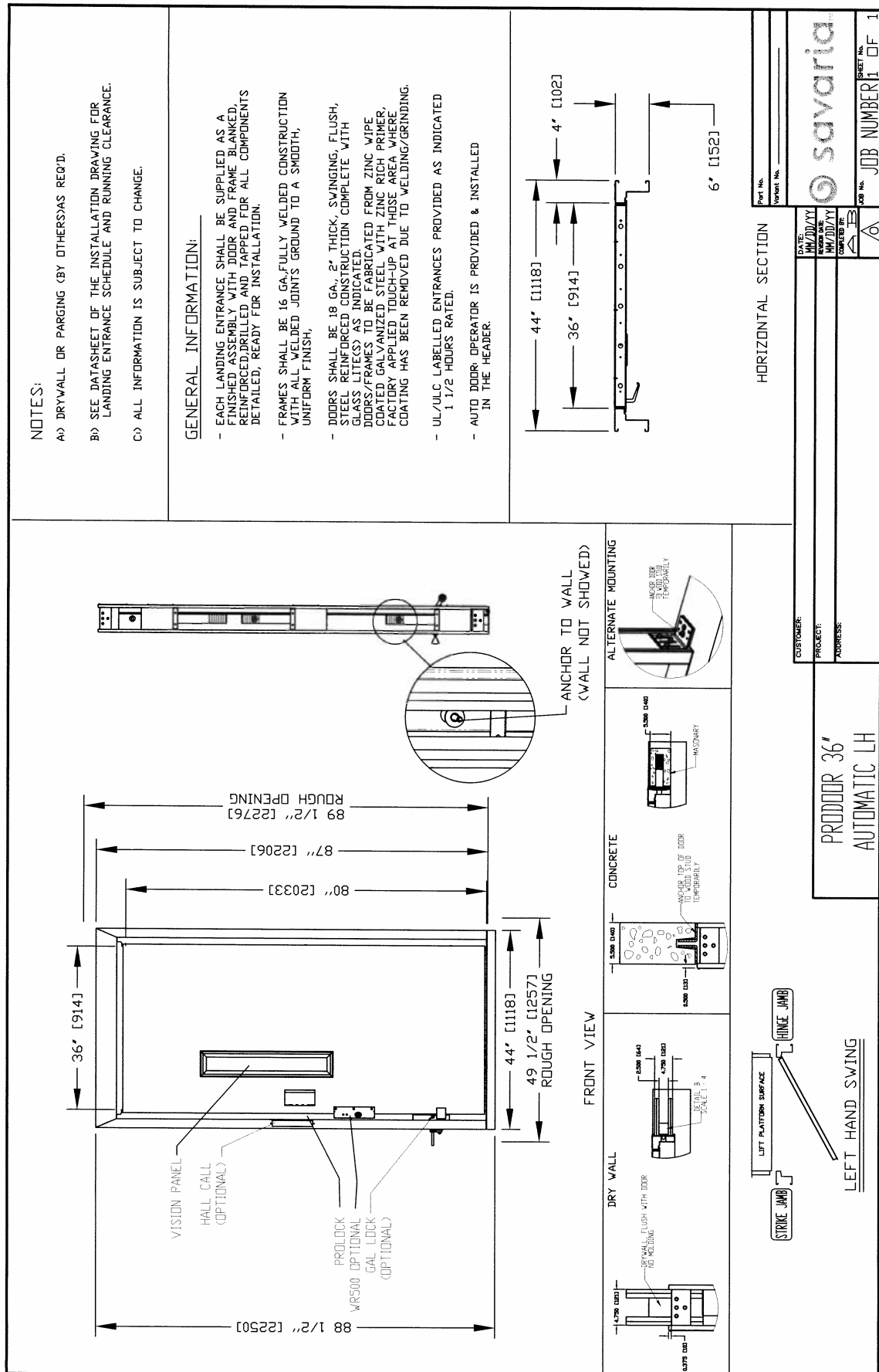


Figure 28: Prodoor auto, right-hand

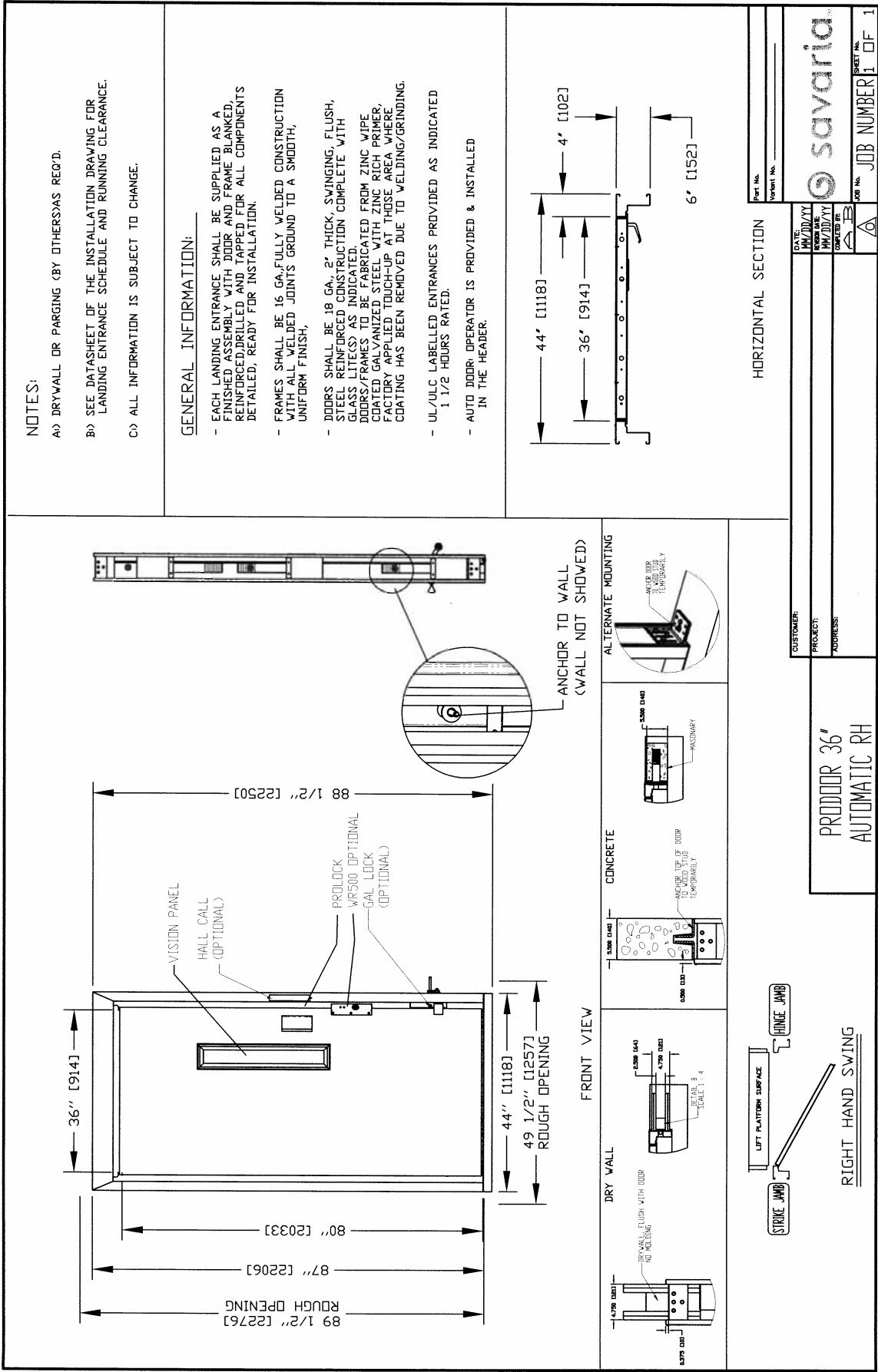


Figure 29: Prodoor manual, left-hand

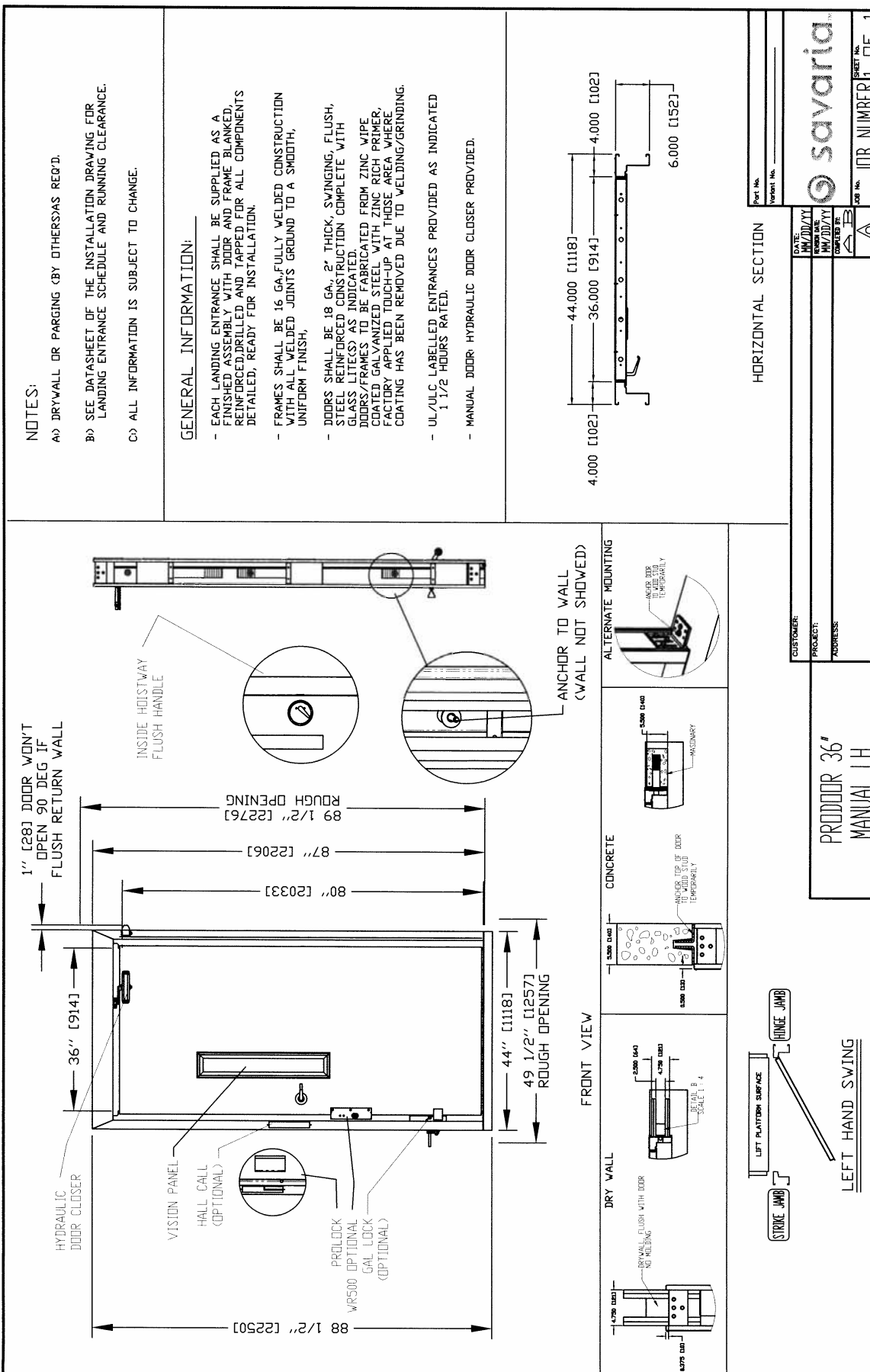
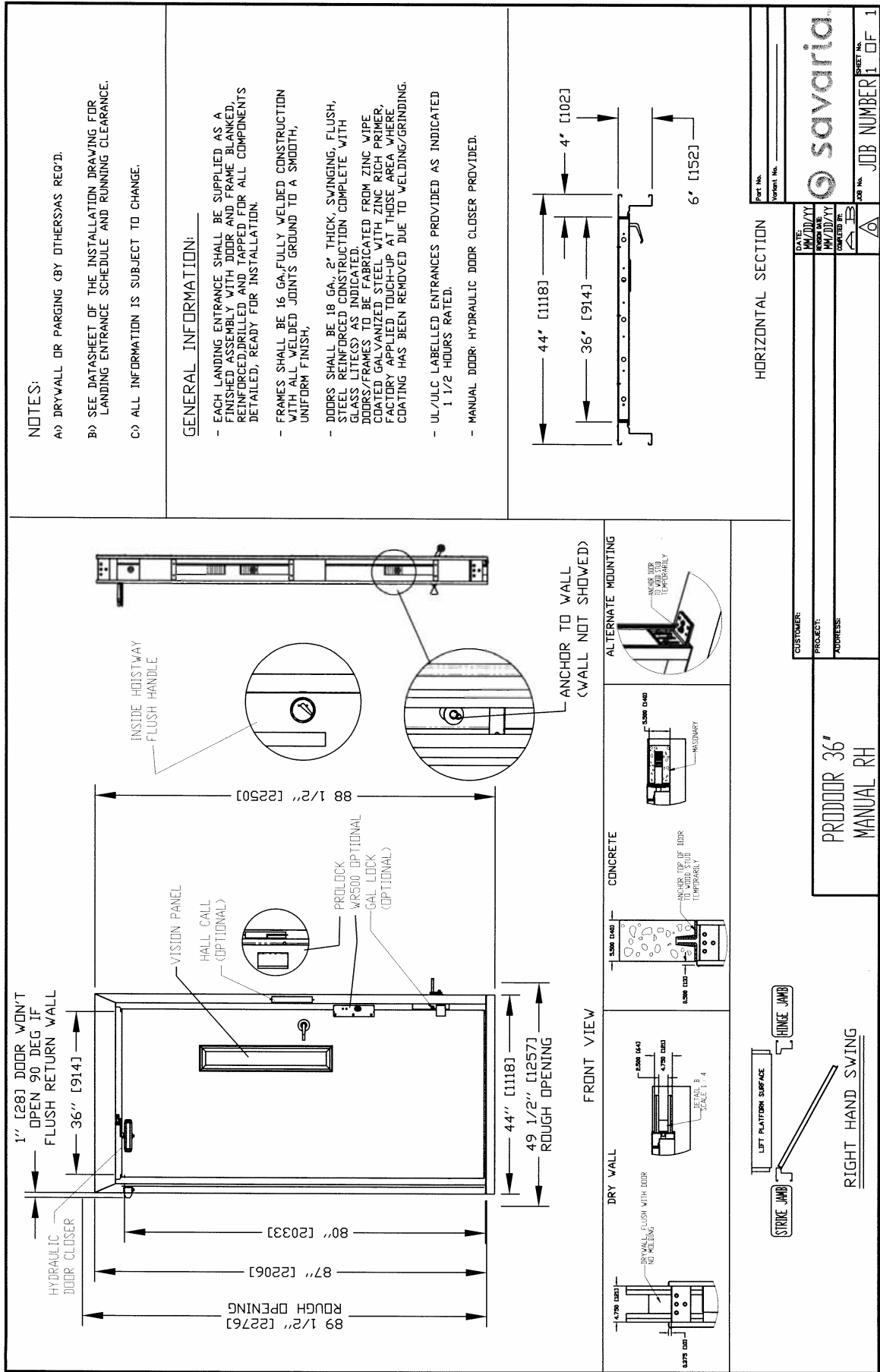
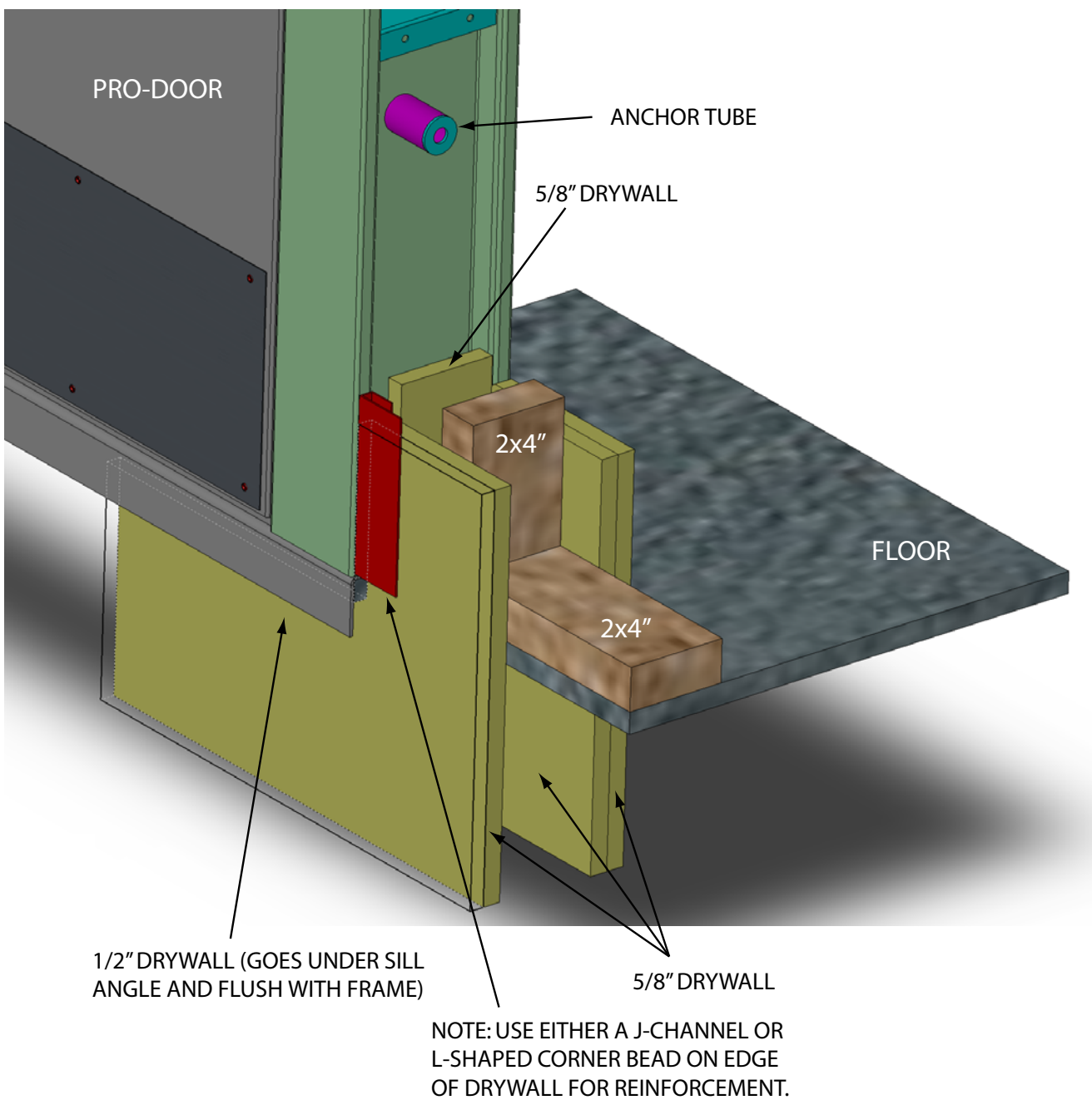


Figure 30: Prodoor manual, right-hand





**Figure 31: Prodoor installation (drywall)**

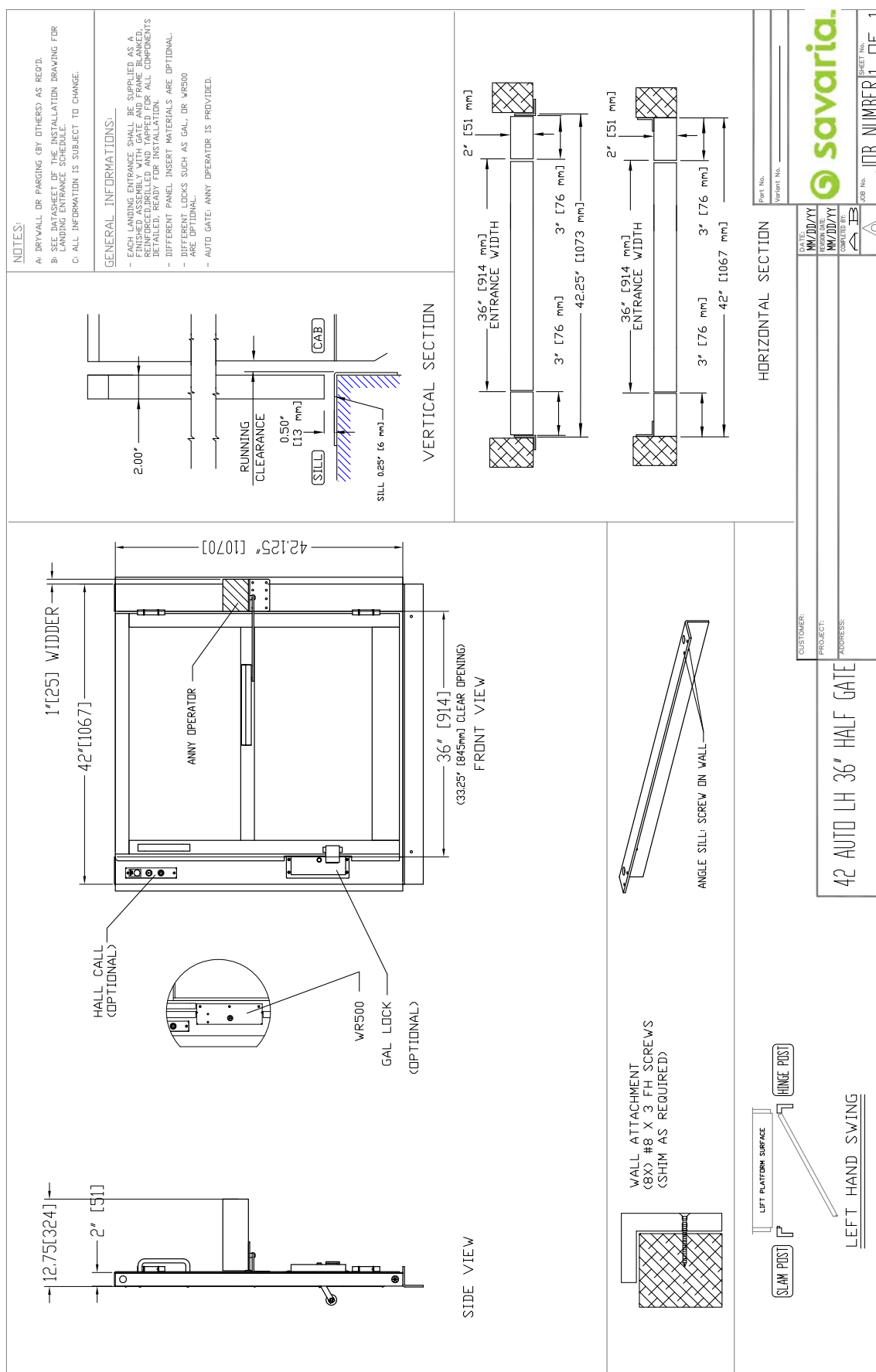


Figure 33: Auto half gate, right-hand

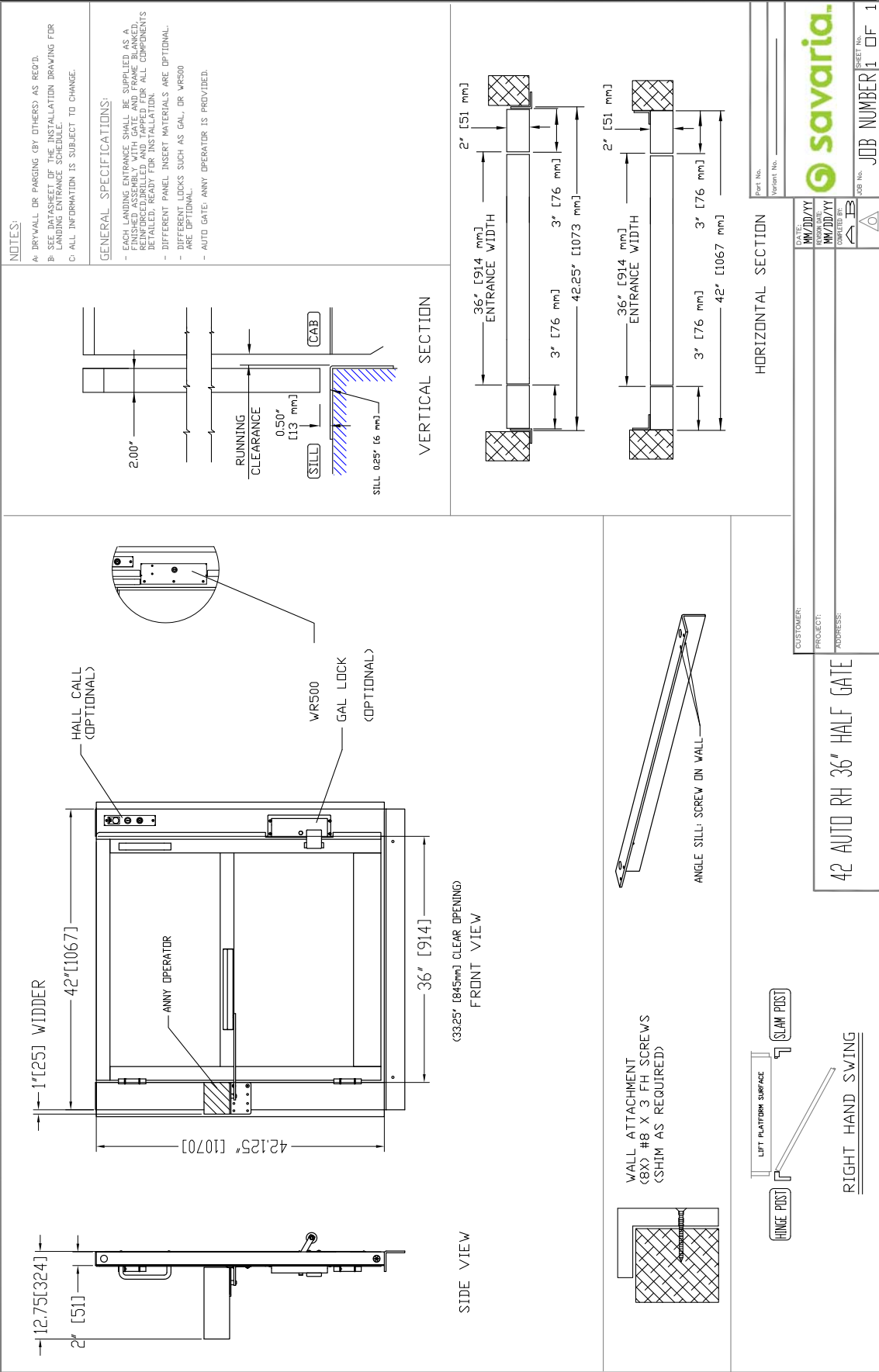


Figure 34: Manual half gate, left-hand

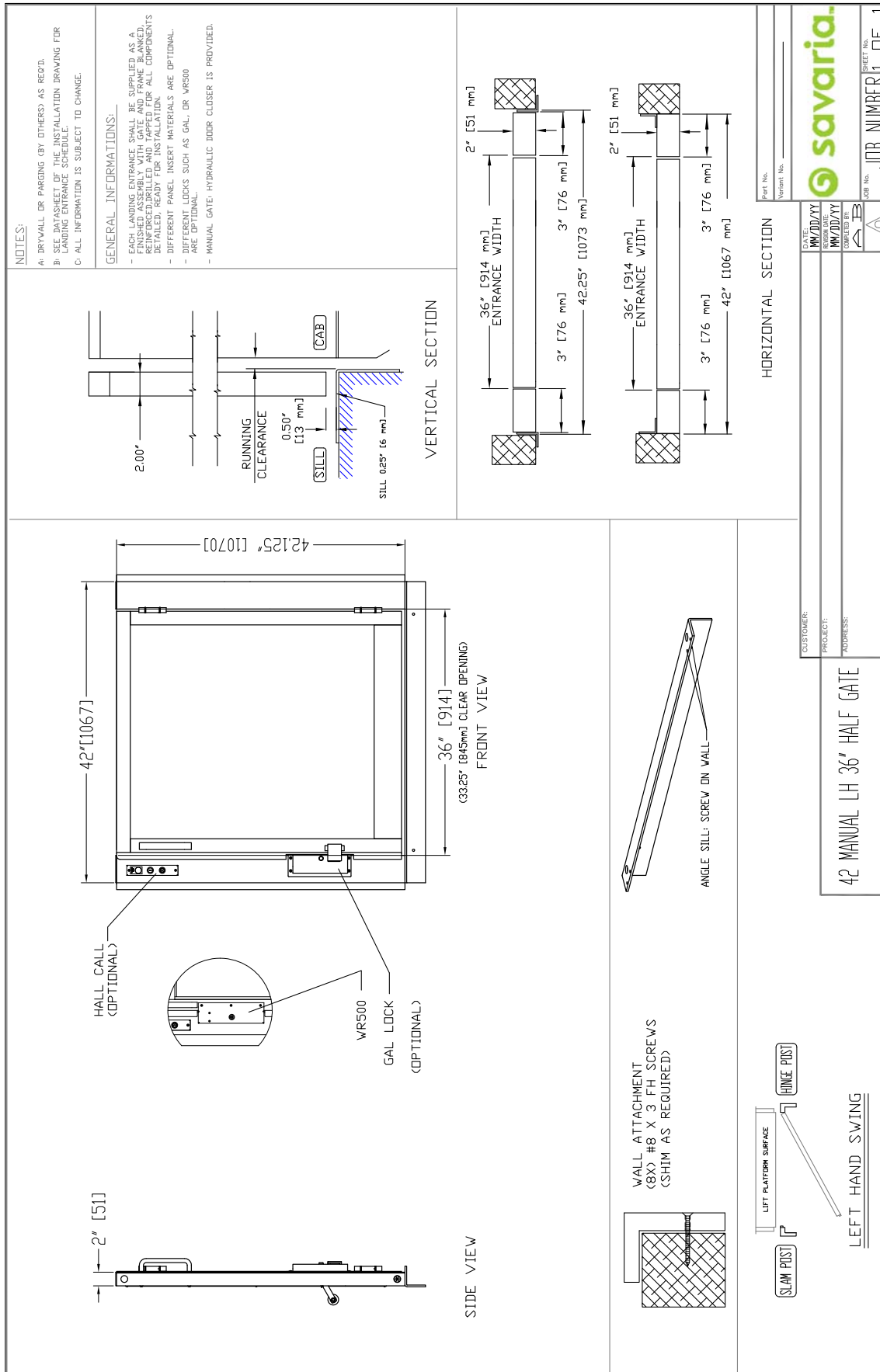


Figure 35: Manual half gate, right-hand

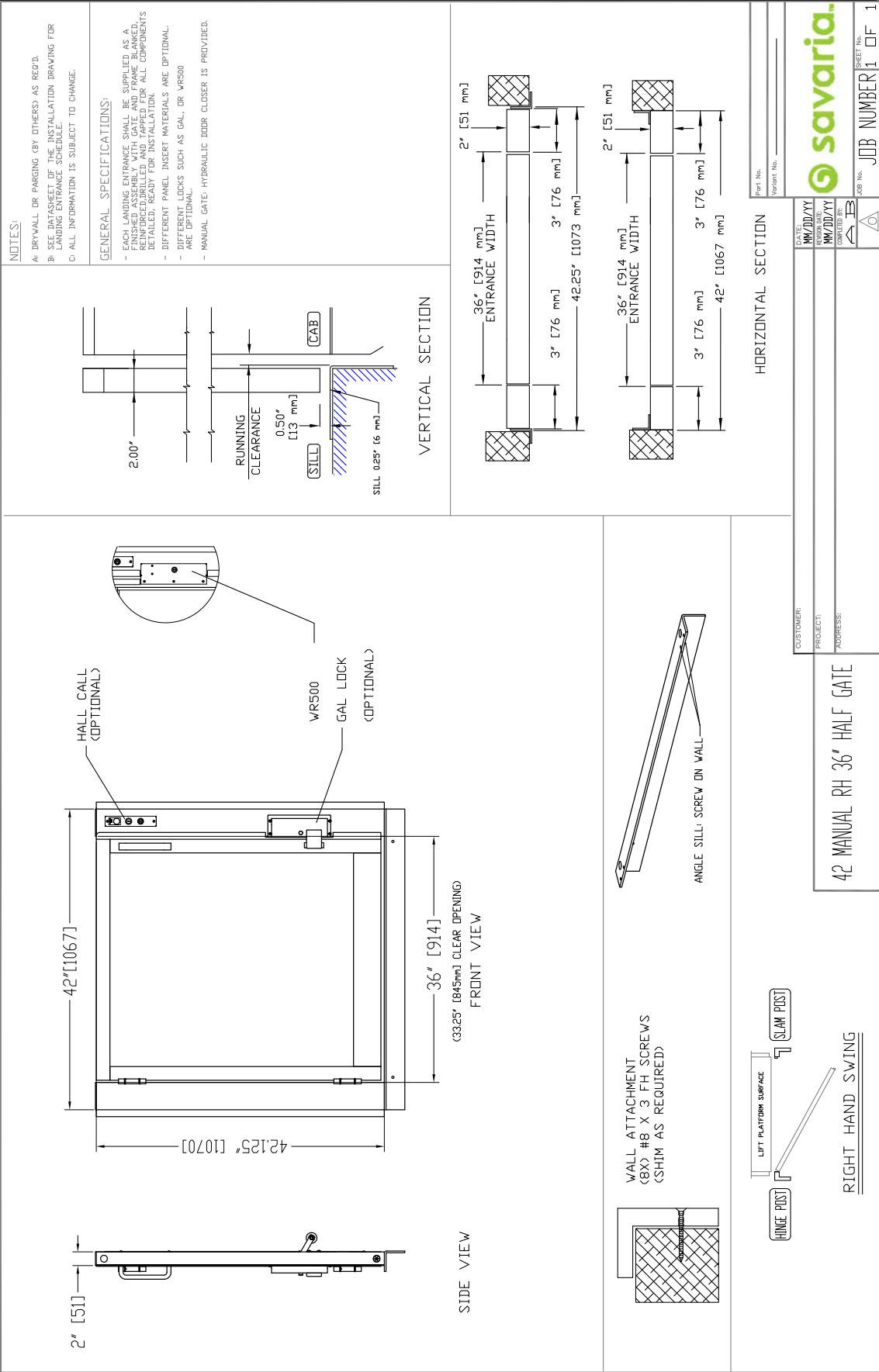


Figure 36: DuraSwing on half gate, right-hand

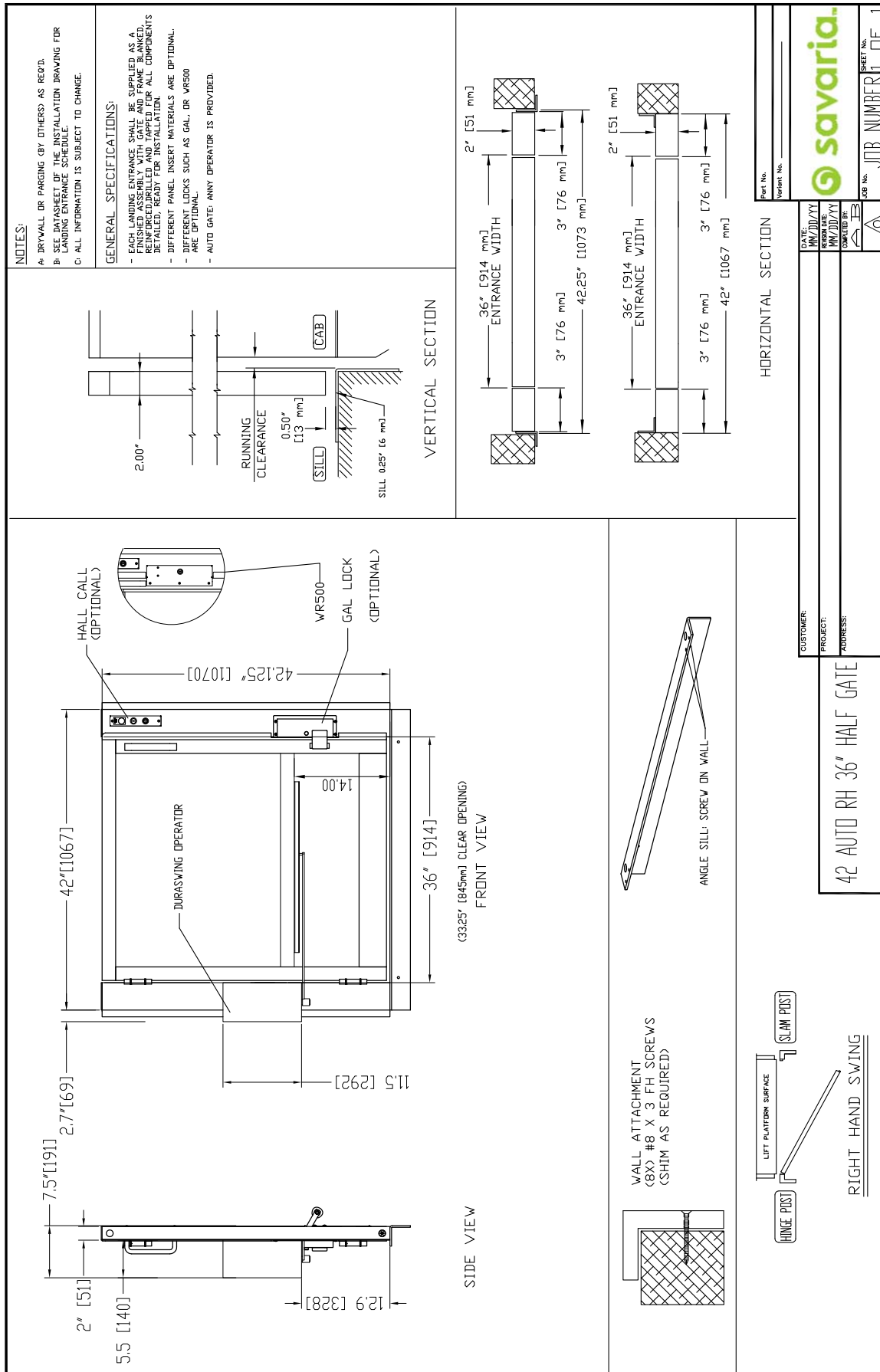
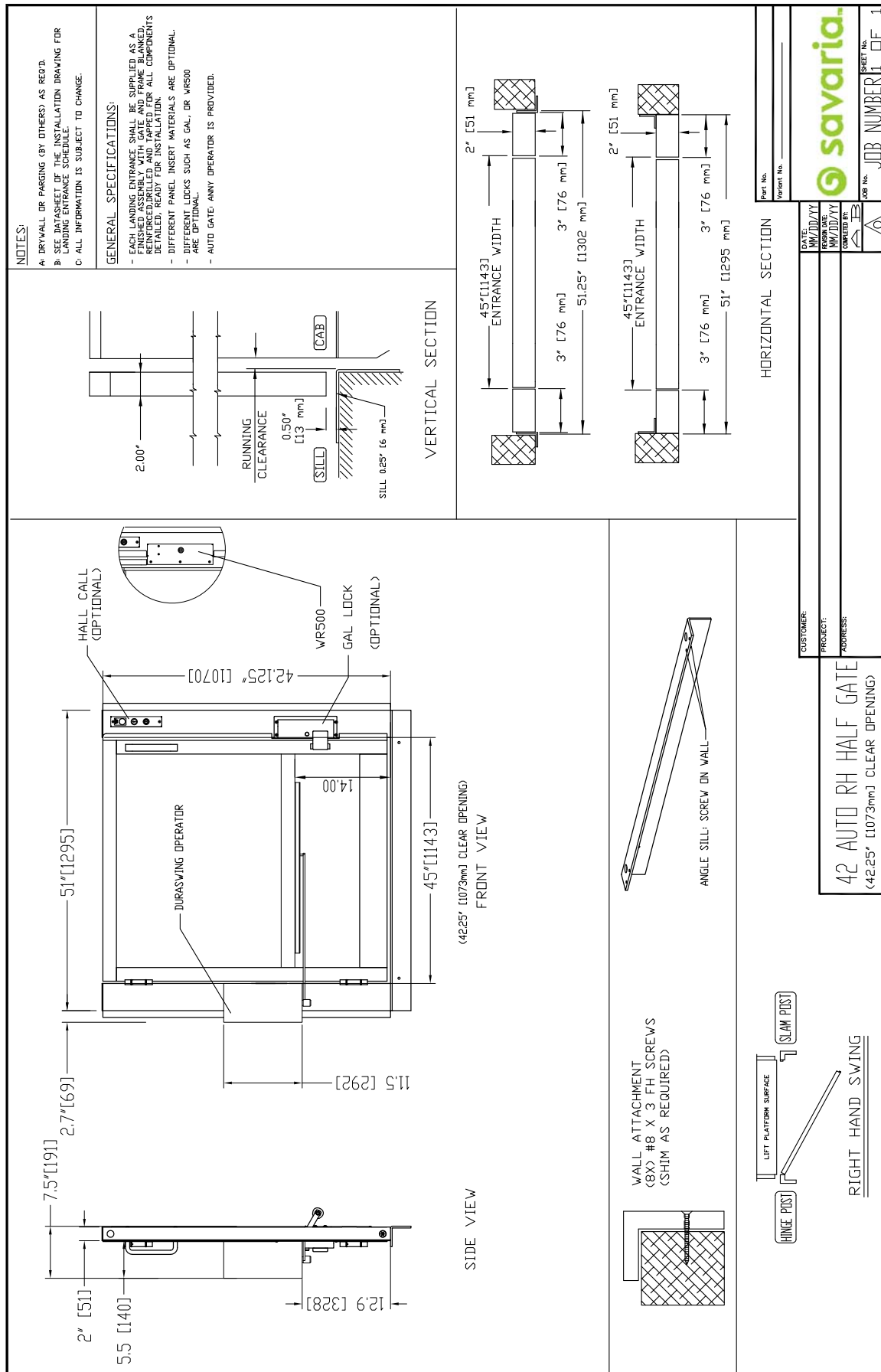


Figure 37: DuraSwing on half gate, right-hand, 45" opening



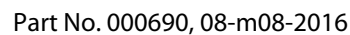
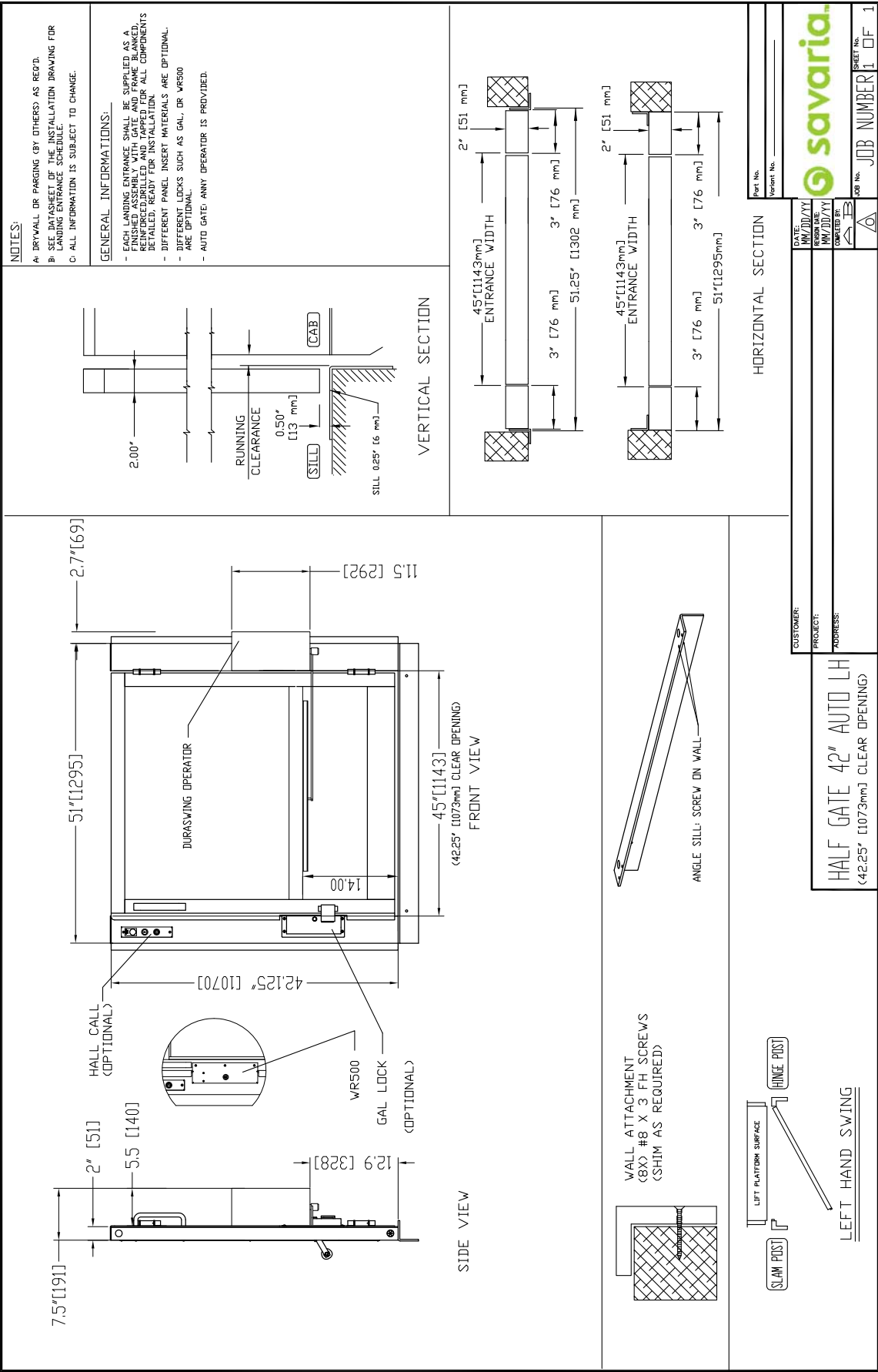
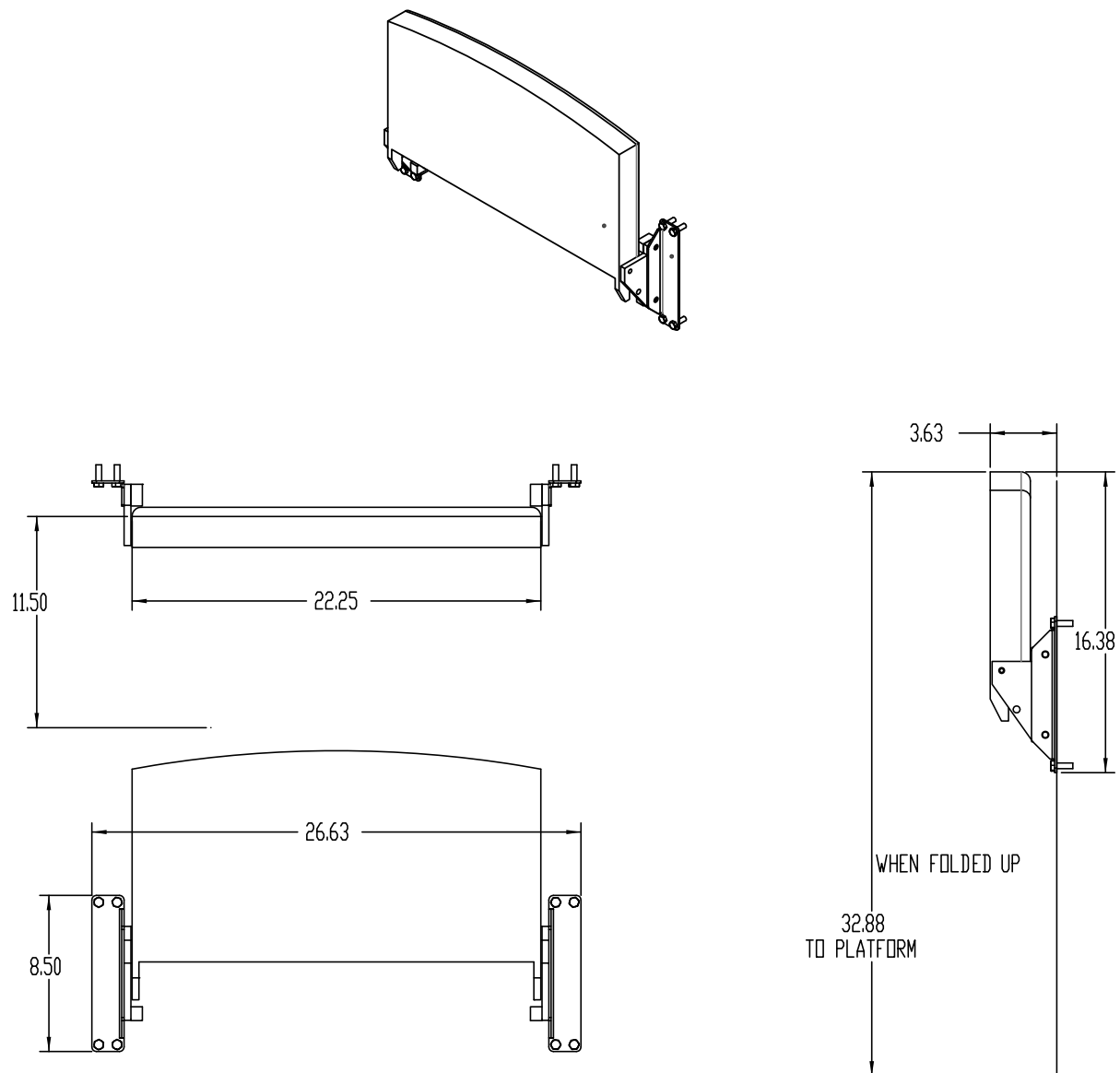


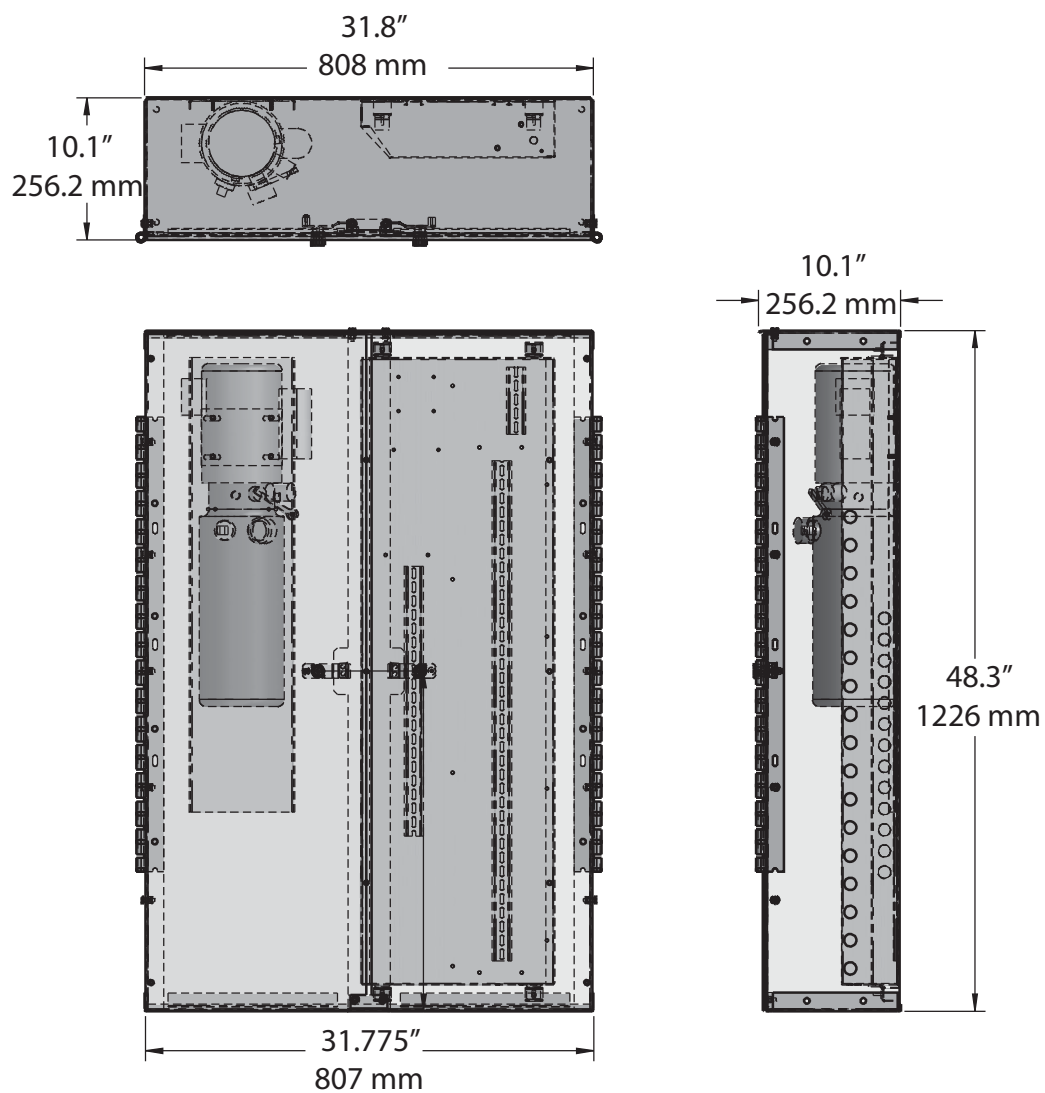


Figure 39: DuraSwing on half gate, left-hand, 45" opening



**Figure 40: Seat dimensions**

NOTE: Maximum seat capacity is 330 lbs (150 kg)

**Figure 41: Remote controller/pump box dimensions**

## PROVISIONS BY OTHERS

### GENERAL REQUIREMENTS

#### Hoistway

The hoistway must be designed and built in accordance with the “safety standard for platform lifts and stairway chairlifts” or the “safety code for elevators and escalators” and all state and local codes.

#### Plumb Runway

Due to close running clearances, the owner/agent must ensure that the hoistway and the pit (where provided) are level, plumb and square and are in accordance with the dimensions on the installation drawings.

#### Minimum Overhead Clearance

The owner/agent must ensure the minimum overhead clearance is in compliance with codes.

#### Construction Site

The owner/agent is required to provide all masonry, carpentry and drywall work as required and shall patch and make good (including finish painting) all areas where walls/floors may need to be cut, drilled or altered in any way to permit the proper installation of the lift.

#### Dimensions

The contractor/customer is required to verify all dimensions and report any discrepancies to our office immediately.

### STRUCTURAL REQUIREMENTS

#### Floor/Support Wall Loads

The structural engineer is to ensure that the building and shaft will safely support all loads imposed by the lift equipment. Refer to the installation drawings for the loads imposed by the equipment.

#### Mast to be Securely Fastened

Where required, the mast must be securely fastened to the structural support wall. Refer to the installation drawings for the loads imposed by the equipment.

#### Where Doors are Required

Suitable lintels must be provided by the owner/agent. Door frames are not designed to support overhead wall loads.

### ELECTRICAL REQUIREMENTS

#### General

Electrical equipment and wiring must comply with Section 38 of CSA C22.1 (Canada) or Section 620 of NEC ANSI NFPA 70 (USA).

#### Power Supply

A 120 VAC, 20A, 60 Hz, single-phase circuit through a fused disconnect with an auxiliary contact on the main power supply is required.

#### Lighting

Lighting of 100 lux minimum is required at platforms and landings. Lighting with a switch and electrical GFCI outlet is required in the hoistway pit.

#### Additional Branch Circuit

Branch circuit with disconnect for door operators, if equipped (120VAC, 15A, 60HZ, 1PH). Branch circuit with disconnect for ventilation system, if equipped (120VAC, 15A, 60HZ, 1PH).

### ENTRANCE REQUIREMENTS

#### Upper Landing Gates

Where required, smooth solid barriers are to be supplied and installed on both sides of the entrance at the upper level and must be a minimum of 42" (1067 mm) high. The entrance assembly must be in place prior to this provision.

#### Fascia Panel Below Upper Level Entrance

Where required, fascia panel must be fastened to a solid wall and be perpendicular to the floor and walls. Hoistway fascia is not self-supporting for long, continuous runs void of entrances. Adequate support for the fascia must be provided.

#### Entrance Assemblies

Entrance assemblies must be adjusted to align with the platform and interlock equipment. Others must allow an adequate opening.

#### Return Walls

Return walls at the entrances must be built-in by others after the entrance assemblies are in place. The entrance assembly must be securely fastened to the walls by the contractor.



# **V1504**

## **Vertical Platform Lift**

### **PLANNING GUIDE**

Part No. 000690  
Copyright © 2016

Savaria Concord Lifts, Inc.  
[www.savaria.com](http://www.savaria.com)

Sales  
2 Walker Drive  
Brampton, Ontario L6T 5E1  
Canada  
Tel: (905) 791-5555  
Fax: (905) 791-2222  
Toll Free: 1-800-661-5112

